



भारतीय प्रबंध संस्थान इंदौर INDIAN INSTITUTE OF MANAGEMENT INDORE

Prabandh Shikhar, Rau-Pithampur Road, Indore - 453556 (M.P.),
India

Ph. 0731-2439620, Email: projectdept@iimidr.ac.in

E-Tender Notice No.

IIMI/Project/02/2025/167 File No.513

तकनीकी व्यावसायिक प्रक्रिया TECHNO COMMERCIAL PROPOSAL

For the Design & Build Contract of

“Renovation & Refurbishing of Director’s Secretariat at IIM Indore”

Sd/-

Tender Inviting Authority

प्रमाणित किया जाता है कि एनआईटी दस्तावेज़ में क्रमिक रूप से 1 से 76 तक 76 पृष्ठ हैं
Certified that the NIT Document contains 76 pages serially numbered from 1 to 76

भारतीय प्रबंध संस्थान इंदौर
INDIAN INSTITUTE OF MANAGEMENT INDORE
अनुक्रमणिका INDEX

क्रमांक Sr. No.	विवरण Contents	पृष्ठ क्र Page No.
	ई - निविदा आमंत्रण सूचना Notice Inviting e-Tender	
A	महत्वपूर्ण घटनाओं / गतिविधियों की अनुसूची Schedule of Important Events / Activities	3
B	सीपीपीपी के माध्यम से ऑनलाइन बोली जमा करने के लिए दिशानिर्देश Guidelines for Online Bid Submission through CPPP	8
C	अन्य जानकारी और नियम और शर्तें Other information and terms & conditions	11
D	पात्रता मानदंड, मूल्यांकन और ठेकेदार का चयन Eligibility Criteria, Evaluation and Selection of Contractor	13
E	अपलोड किए जाने वाले दस्तावेजों की सूची List of Documents to be uploaded	16
F	टेंडरर को सामान्य निर्देश General Instructions to tenderers	17
G	भुगतान की शर्तें Terms of Payment	19
H	सुरक्षा कोड Safety Codes	20
I	अग्नि सुरक्षा Fire Safety	25
J	इंटीग्रिटी पैक्ट Integrity Pact	26
K	अनुबंध Agreement	32
L	अनुबंध की सामान्य स्थिति General Condition of Contract	35
M	अनुसूचियों का प्रोफार्मा Proforma of Schedules	36
N	अनुबंध की विशेष शर्तें Special Conditions of Contract	39
O	विभिन्न रूपों / प्रमाण पत्रों के लिए प्रारूप Formats for Different Forms/Certificates	45
P	कार्य का दायरा, तकनीकी विनिर्देश, और अनुमोदित निर्माता Scope Of Work, Technical Specifications & Approved Makes	50
Q	वित्तीय बोली Financial Bid	76

Dated: March 21, 2025

NOTICE INVITING E-TENDER

Director, Indian Institute of Management Indore invites online bids in two bid system (i.e., Technical bid & Financial bid) from the eligible contractor firms/ agency/ enterprise for the Design & Build Contract of “Renovation & Refurbishing of Director’s Secretariat at IIM Indore”. Details are as follows:

A.	महत्वपूर्ण घटनाओं / गतिविधियों की अनुसूची Schedule of Important Events / Activities
-----------	--

A.1 बोली से संबंधित जानकारी Information Related to Bid

A.1.1	एन आई टी न. : आई. आई. एम. आई./परियोजना/02/2025/167 फ़ाइल न.513 NIT No.: IIMI/Project/02/2025/167 File No.513	
A.1.2	About the Institute	<p>The Indian Institute of Management Indore (IIM Indore) was established by the Government of India as an institute of excellence in higher education. Founded in 1996 as part of the second generation of IIMs, it is the sixth institute in the family of state-supported management schools.</p> <p>The IIM Indore campus is situated on Rau-Pithampur Road, approximately 25 km from the city center. As an institution committed to ethical practices, we uphold transparency in all aspects of our work. There is minimal interference in project execution, except for quality assurance and timely delivery.</p> <p>Contractors and vendors are required to coordinate solely with the designated engineer for all project-related matters. No materials shall be permitted to enter the campus through the security gate without prior inspection and approval by the concerned engineer, ensuring compliance with the technical specifications outlined in the tender.</p> <p>Upon completion of the work, a joint measurement will be conducted, and the bill shall be submitted only after its acceptance. Payments will be processed online, eliminating the need for direct interaction with any personnel.</p> <p>Strict quality control measures will be enforced to ensure execution as per the</p>

		prescribed technical specifications and approved brands/materials. In cases where a brand or its equivalent is specified, the sample must be approved in advance.
A.1.3	कार्य का नाम Name of Work	“Renovation & Refurbishing of Director’s Secretariat at IIM Indore”
A.1.4	निविदा की प्राक्कलित राशि Estimated Cost Put to Tender (Excluding Goods & Service Tax)	Rs. 2,39,21,753/- (Rupees Two Crore Thirty-Nine Lakh Twenty One Thousand Seven Hundred Fifty Three Only) (Excluding Goods & Service Tax)
1.5	ईएमडी Earnest Money Deposit (EMD) (in Rs.)	<p>Rs. 4,78,435/- (Rs. Four Lakh Seventy-Eight Thousand Four Hundred Thirty-Five Only) by e-payment through electronic mode (NEFT/ RTGS)</p> <p>Bank Detail is given below:</p> <p>Name of Beneficiary: Indian Institute of Management Indore Account No.: 53018623445 Name of the Bank: State Bank of India IFSC Code: SBIN0030525</p> <p>Bidders will have to upload scanned copy of Payment details towards cost of EMD during the submission of tender and the same will be accepted only on verification & confirmation by the Institute. Any delay in credit will not be entertained by the Institute.</p> <p>Note:</p> <ol style="list-style-type: none"> 1. EMD shall be refunded after the selection process is over. 2. Normally in the case of unsuccessful bidders it gets refunded on or before the 30th day after the award of the contract. 3. The EMD deposited along with bid by the successful bidder shall be returned after receiving the requisite performance guarantee. 4. EMD may be forfeited - <ul style="list-style-type: none"> • if any bidder withdraws or modify their Bids during the period of validity, or • if the successful bidder, after being awarded the contract, fail to sign the contract, or to submit a performance Guarantee before the deadline defined in

		<p>the tender document or as per the instruction of IIM Indore, whichever is later. In this case the action of forfeiture shall be undertaken without any notice. Also, the bidder shall not be allowed to participate in the re-tendering process of the services. Along with the aforesaid, they will be suspended for a period of two years from being eligible to submit Bids for contracts with the IIM Indore.</p> <p>5. Bid not accompanied by the requisite EMD shall be considered as non-responsive and shall be rejected.</p>
A.1.6	समापन की अवधि Completion period	90 Days
A.1.7	निविदा जमा करने की विधि Mode of submission of tender	केवल ऑन-लाइन मोड On-Line mode only

A.2 प्रमुख घटनाएँ और तिथियाँ Key Events and Dates

A.2.1	प्रकाशित करने का दिनांक Publishing Date	March 21, 2025
A.2.2	Site Visit	<p>All prospective bidders are advised to visit the site of work prior to submitting their bids to familiarize themselves with the site conditions, scope of work, and project requirements. The bidders shall assess all factors, including access, logistics, existing infrastructure, and any other site-specific conditions that may influence their bid.</p> <p>The visit shall be conducted at the bidder's own cost, and no claims for lack of understanding of site conditions shall be entertained later. For coordination, site access, any clarification etc, bidders may contact the Project Department, IIM Indore during office hours on following contact numbers: 0731-2439620, 9805257112</p>
A.2.3	दस्तावेज सहित निविदा के ऑनलाइन जमा करने की अंतिम तिथि और समय	Up to 2.30 PM of March 27, 2025

	Last date and time of closing of uploading/online submission of tender	
A.2.4	तकनीकी बोली के ऑनलाइन खोलने की तिथि और समय Date & Time of online opening of technical bid	03:00 PM of March 28, 2025
A.2.5	योग्य बोलीदाताओं की वित्तीय बोली खोलने की तिथि और समय Date and Time of opening of financial bid of qualified bidders	बाद में सूचित किया जाएगा Will be notified later

A.3 बोली से संबंधित अन्य महत्वपूर्ण जानकारी Other Important Information Related to Bid

A.3.1	प्रतिभूति जमा Security Deposit	2.5 % of accepted tendered value (Awarded Value) to be recovered from running bills. Alternatively, Bank Guarantee (BG) Or fixed deposit receipts from a scheduled bank may be submitted, to be payable at Indore. And it must be valid up to 60 days after defect liability period.
A.3.2	परफॉर्मन्स गारंटी Performance Guarantee	<p>5% of accepted tendered value (Awarded Value) on acceptance of bid. The performance guarantee may be submitted in the form of bank guarantee OR demand draft OR fixed deposit receipt from a scheduled bank which shall be refunded after 60 days of completion of contract as per complete scope of this tender/issue of completion certificate whichever is later.</p> <p>Note:</p> <ol style="list-style-type: none"> The time period for submission will be governed by following clauses: <ol style="list-style-type: none"> Time allowed for submission of Performance Guarantee will be 7 Days from the date of issue of "Letter of Intent/Commencement". Maximum allowable extension will be with late fee @ 0.1% per day of Performance Guarantee amount beyond the period provided in (i) above: 7 days. Performance Guarantee shall be forfeited. <ul style="list-style-type: none"> If the successful bidder, after being awarded, fails to start the Mobilization of resources as per agreed schedule at site within 7 days as mentioned in this tender or as directed by competent Authority of IIM Indore. Upon Determination / termination of the contract. In the case of determination / termination along with the performance guarantee, security deposit already recovered shall also be forfeited. The decision of director IIM Indore shall be final & binding in case of the forfeiture.
A.3.3	बोली की वैधता Bid Validity	निविदा खोलने की तिथि से 90 दिन 90 Days from the date of opening of tender

A.3.4	Method of Selection	Quality and Cost Based Selection
A.3.5	Workmen Compensation Insurance Policy	"Workman's Compensation Insurance Policy" for the workmen engaged by successful bidder for the aforesaid work against any eventuality arising from injury due to fall from height/ death due to any mishap / disability faced due to any such unwanted incidents etc. during the execution of work is to be submitted by the bidder.
A.3.6	Maintaining the cleanliness at the site	Contractor has to maintain the cleanliness at the site to the level instructed by the Engineer-in-Charge. Negligence in this essence shall attract penal provision as decided by Engineer-in-Charge.

B. Guidelines for Online Bid Submission Through CPPP

- B.1 It is mandatory for all the applicants to have class II or III digital signature certification from licensed certifying agency like NIC, MTNL, e-mudra, TCS, safescript, GNFC etc.
- B.2 Detailed tender can be viewed free of cost on IIM Indore website under the URL <http://www.iimidr.ac.in/tenders/>. Financial bid form can be downloaded only from <https://eprocure.gov.in/eprocure/app>. Uploading of tender will be possible only after making payment of EMD.
- B.3 The tender shall be submitted online in the prescribed format before the date and time as mentioned in tender.
- B.4 The applicant have to upload the details of e-payment of EMD before the last date & time and download the tender documents form the e-tendering portal <https://eprocure.gov.in/eprocure/app>.
- B.5 Tenderer are advised to upload their documents well in time to avoid last minute rush on the server or complication in uploading. IIM Indore will not be responsible for any type of problem in uploading the documents. No hard copies for tender submission shall be entertained.
- B.6 Online bid documents submitted by intending bidders shall be opened only of those bidders, who has deposited e-Tender EMD and other documents scanned and uploaded are found in order.
- B.7 Information and Instructions for bidders posted on the website shall form part of bid document.
- B.8 The bid document consisting of plans, specifications of various types of items to be executed and the set of terms and conditions of the contract to be complied with and other necessary documents can be seen and downloaded from website <https://eprocure.gov.in/eprocure/app> free of cost.
- B.9 Those bidders not registered on the website mentioned above, are required to get registered beforehand. If needed the intending bidders may get acquainted with the process online from the www.eprocure.gov.in site itself.

- B.10 On opening date, the bidder can login and see the bid opening process. After opening of bids, he will receive the competitor bid sheets.
- B.11 Bidder can upload documents in the form of JPG format and PDF format.
- B.12 The price bid format is provided in a spread sheet file like Financial bid.xls, the offer should be entered in the allotted space only and uploaded after filling the relevant columns. Financial Bid must not be modified/replaced by the bidder; else the bid submitted is liable to be rejected for this tender.
- B.13 Bidder must ensure to quote each item. Therefore, if any cell is left blank and no rate is quoted by the bidder, rate of such item shall be treated as “0” (ZERO) although the item have to be executed as per scope of contract.
- B.14 The technical bid (stage-1) will be opened online first on due date and time, as mentioned above. The time and date of opening of Technical bid (stage-2) and financial bid of bidders qualifying the technical bid (stage-1) & financial bid respectively will be uploaded on CPPP.
- B.15 Completed Tenders containing technical bid and Financial bid will be received ONLINE only on CPP Portal website <https://eprocure.gov.in/eprocure/app> at the fixed time and date indicated in the tender. The Tenderer will be at liberty to be present either in person or through an authorized representative at the time of opening of the Technical Bid with the Bid Acknowledgement Receipt or they can view the bid opening event online at their remote end.
- B.16 If there are any clarifications, this may be obtained online through the tender site, or through the contact details. Bidder should take into account the corrigendum published on Institute’s website before submitting the bids online.
- B.17 It is construed that the bidder has read all the terms and conditions before submitting their offer. Bidder should go through the tender schedules carefully and upload the documents as asked; otherwise, the bid will be rejected.
- B.18 The bidder has to digitally sign and upload the required bid documents one by one as indicated. Bidders to note that the very act of using DSC for downloading the bids and uploading their offers shall be deemed to be a confirmation that they have read all sections and pages of the bid

document including General conditions of contract without any exception and have understood the entire document and are clear about the requirements of the tender requirements.

- B.19 The bidders are requested to submit the bids through online e-tendering system to the Tender Inviting Authority (TIA) well before the bid submission end date & time (as per Server System Clock). The TIA will not be held responsible for any sort of delay, or the difficulties faced during the submission of bids online by the bidders at the eleventh hour. Tenderers are advised to upload their documents well in time to avoid last minute rush on the server.
- B.20 The time settings fixed in the server side & displayed at the top of the tender site, will be valid for all actions of requesting, bid submission, bid opening etc., in the e-tender system. The bidders should follow this time during bid submission.
- B.21 The maximum size of file to be uploaded during submission of tender through online mode will be governed by the CPP Portal provisions.
- B.22 For any queries regarding e-tendering process, the bidders are requested to contact as provided in the tender document. Parallely for any further queries, the bidders are asked to contact over phone: 0120-4200462, 0120-4001002, 91 8826246593 or send a mail over to cppp-nic@nic.in

C. Other information and terms & conditions

- C.1 The bid submitted shall become invalid:
- If the bidder is found ineligible.
 - If any of the bidder put his quoted rates (as in financial bid document) in the envelope of Cover-I: Technical Bid.
 - If the documents submitted by the successful bidder does not match with the originals before the award of work.
- C.2 However, certified copy of all the scanned and uploaded documents as specified in NIT shall have to be submitted by the lowest bidder only within a week physically in the office of the “Chief Officer Engineering, Indian Institute of Management Indore, Prabandh Shikhar, Rau - Pithampur Road, Indore 453556 (M.P.).
- C.3 IF ANY INFORMATION FURNISHED by the applicant is found to be incorrect at a later stage, they shall be liable to be debarred from tendering/ taking up works in IIM INDORE.
- C.4 The competent authority on behalf of the Director IIM Indore does not bind itself to accept the lowest or any other bid and reserves to itself the authority to reject any or all the bids received without the assignment of any reason. All bids in which any of the prescribed condition is not fulfilled or any condition including that of conditional rebate is put forth by the bidders shall be summarily rejected.
- C.5 Canvassing whether directly or indirectly, in connection with bidders is strictly prohibited and the bids submitted by the contractors who resort to canvassing will be liable for rejection.
- C.6 The competent authority on behalf of the Director, IIM Indore reserves to himself the right of accepting the whole or any part of the bid and the bidders shall be bound to perform the same at the rate quoted.
- C.7 *The bid for the works shall remain open for acceptance for a period of Ninety (90) days from the date of opening of technical bid.* If any bidders withdraws his bid before the said period or issue of letter of acceptance, whichever is earlier, or makes any modifications in the terms and conditions of the bid which are not acceptable to the department, then the IIM Indore shall, without prejudice to any other right or remedy, be at liberty to suspend the bidder for two years.
- C.8 This notice inviting Bid shall form a part of the contract document. The successful bidders/contractor, on acceptance of his bid by the Accepting Authority shall within 15 days from the date of communication, sign the contract consisting of:-
- The Notice Inviting Bid, all the documents including additional conditions, specifications, General Conditions of Contract and drawings, if any, forming part of the bid as uploaded at the time of invitation of bid and the rates quoted online at the time of submission of bid and acceptance thereof together with any correspondence leading thereto.

C.9 TAXES: -

- i) The Contractor should get registered under GST and tax as applicable as per the extant order on the subject work shall be paid by the contractor to concerned department. Which will be reimbursed by the Institute as per the recommendation of Finance & Accounts department of the Institute & the same will be final & binding to the contractor.
- ii) The quote should exclude the GST and inclusive of all other taxes applicable for the subject work.
- iii) Labour Welfare cess @ 1 % of gross value of work done shall be recovered from each bill paid to the contractor.
- iv) Income Tax and cess as applicable shall be deducted from bill paid to the contractor.
- v) Contractor should be registered under EPF and as per law, shall pay EPF of contract workers to concerned Department from time to time.
- vi) Any other taxes/cess as per Government directives shall be deducted from each bill paid to the contractor from time to time.

C.10 The specifications, Terms & Conditions, other regulations which are not herein mentioned will be guided by IIM First regulation, manual for procurement of works from ministry of finance & department of expenditure of Govt. of India, relevant CPWD guidelines, manual, specifications / BIS / IS/ Other Central / State Govt. norms applicable for IIM Indore & as prescribed by the OEM and the decision in this regard will be guided by the decision of the competent authority of IIM Indore which shall be final and binding to the contractor.

C.11 Tender documents may be downloaded from IIM Indore's website/ CPPP e-Publishing portal free of cost.

C.12 Tenders and supporting documents should be uploaded through eprocurement portal i.e. CPPP only. Hard copy of the tender documents will not be accepted.

C.13 In the event of acceptance of a tender or as per the decision of the competent authority of IIM Indore, the documents submitted by the bidder/ successful bidder shall be verified with the originals before the award of work.

C.14 On acceptance of the tender, the tenderer has to furnish a bar chart showing work completion schedule and submit it along with the performance security guarantee.

C.15 "Provision of Public Procurement (Preference to Make in India), Order 2017-Revision regarding" notification issued from the Ministry of Commerce and Industry, Department for promotion of industry and internal Trade (Public Procurement Section), Govt. Of India vide ref.no. P-45021/2/2017-PP (BE-II), dated 04th June 2020, will be applicable for this tender.

C.16 The tenderer should not have been blacklisted or debarred by any Central/ State/ Autonomous/ Public Agency during last three financial years. In case blacklisted/ debarred bidder fills/ submits the bid/ being successful in bidding process awarded the job or during the execution of job the fact of being blacklisted/ debarred surfaced then the

- Bid (during the bidding process) will be considered as invalid &
- During the execution, if surfaced, then the contract will be liable to be terminated

D.	Eligibility Criteria, Evaluation and Selection of Contractor
-----------	---

a. Minimum Eligibility Criteria:

Prospective bidder should have the following for making oneself eligible for participation in the bidding process (Joint Ventures are not allowed):

1. **Work Experience:** Experience of having successfully completed similar works during the last seven years ending previous day of last date of submission of tenders.

One completed work of aggregate cost not less than the amount equal to 80% i.e. **Rs.1,91,37,402/-** of the estimated cost put to tender.

OR

Two completed works each costing not less than the amount equal to 60% i.e. **Rs.1,43,53,052/-** of the estimated cost put to tender.

OR

Three completed works each costing not less than the amount equal to 40% i.e. **Rs.95,68,701/-** of estimated cost put to tender.

Similar work means “Design & Build / turn-key / EPC contract comprising of civil, electrical, air-conditioning works etc”

Note: The completion certificate issued from clients should indicate the date of commencement, period of completion- stipulated & actual, awarded cost & cost at completion, quality of work done, reason for delay (if any) etc.

2. **Turnover:** Average annual financial turnover on construction works should be at least 50% i.e. **Rs. 1,19,60,877/- (Rupees One Crore Nineteen Lakh Sixty Thousand Eight Hundred & Seventy-Seven Only)** of the estimated cost put to tender during three financial years out of last seven financial years (Scanned copy of original certificate from CA having UDIN Number to be uploaded)
3. **Profit/loss:** The bidder should not have incurred any loss (before tax) in more than two years during last five consecutive P&L accounts, duly audited & certify by Chartered Accountant.
4. Solvency certificate from scheduled commercial bank for an amount equal to min. **Rs.95,68,701/- (Rupees Ninety Five Lakh Sixty Eight Thousand Seven Hundred & One only)**. (Date of issue should be during the period of this tender submission or else the validity period should be mentioned on the Solvency Certificate & this should cover up the tender submission period).
5. **Certificates:** (scanned copy of original certificates to be uploaded)
 - 5.1 PAN (Permanent Account Number)
 - 5.2 GST (Goods & Service Tax) Registration Certificate (in Active status)
 - 5.3 E-payment details towards EMD.
6. **Past performance in IIM Indore:** Bidder, whose contract in IIM Indore has been
 - a. determined/ terminated due to contractor's inability to execute the work,

will be disqualified technically even though they may meet the other technical/eligibility criteria.

b. Delayed due to contractor's inability to execute the work, will be disqualified technically even though they may meet the other technical/eligibility criteria.

b. OVERALL EVALUATION PROCESS & SELECTION OF CONTRACTOR:

Bidding Process will be a two-bid system which comprises of technical bid and financial bid. Further the technical bid will be subdivided into two stages namely technical bid stage-1 and technical bid stage-2. The ratio of weightages for cost (financial) and technical score will be 70:30 (Seventy: Thirty).

The Method of selection will be Quality and Cost Based Selection (QCBS). As is said earlier the technical bid will be evaluated in two stages, stage-1 will be based on minimum eligibility criteria required in respect of bidder's work experience & credentials whereas technical bid stage - 2 would be based on bidder's organizational structure, staffing, production capacity, quality assurance mechanism in place and the same will be evaluated through the presentation submitted by bidder. After that the financial bid will be opened for the qualified bidders of the respective stage only. The weightage would be as follows.

i. Technical Bid

- Stage-1 (Bidder's work experience/ credentials) viz. minimum eligibility based on the criteria given at page 11 of NIT Document. For this no marks will be allocated towards final evaluation but this will be considered as mandatory for making oneself eligible to participate in the subsequent bidding process.
- Stage-2 (Comprising of bidder's organizational structure, staffing, quality assurance mechanism in place and the concept design for the work based on the requirements of IIM Indore): Weightage 30% (based on presentation)

ii. Financial Bid (i.e. cost) =70%

The bidder scoring the highest marks after final evaluation i.e. combined/ composite will be considered for selection of a contractor after due negotiation of cost, if required.

Note:

i. The broad methodology brief is as follows:

"Proposal with the lowest cost may be given a financial score of 100 (Hundred) and other proposals given financial scores that are inversely proportional to their prices w.r.t. the lowest offer.

Similarly, proposal with the highest technical marks (as allotted by the evaluation committee) shall be given a score of 100 (Hundred) and other proposals be given technical score that are proportional to their marks w.r.t. the highest technical marks. The total score, both technical and financial, shall be obtained by weighing the quality and cost scores and adding them up. On the basis of the combined weighted score for

quality and cost, the contractor shall be ranked in terms of the total score obtained. The proposal obtaining the highest total combined score in evaluation of quality and cost will be ranked as H-1 followed by the proposals securing lesser marks as H-2, H-3 and so on. The proposal securing the highest combined marks and ranked H-1 will be invited for negotiations, if required and shall be recommended for award of contract.”

- ii. In the event two or more bids have the same score in final ranking, the bid with highest technical score will be H-1.

c. Details of marking & evaluation methodology:

c.1 TECHNICAL BID (STAGE-1)

The bidder will be shortlisted based on minimum eligibility criteria given at page 11 of NIT Document. For this no marks will be allocated towards final evaluation but this will be considered as mandatory for participation in the subsequent bidding process.

c.2 Technical bid (STAGE-2)

All those bidders who gets qualified in the Evaluation of Technical Bid (stage-1) will be eligible to participate in stage-2. The evaluation in this stage shall be based on presentation submitted by the bidder. The presentation shall be comprising of bidder's organizational structure, staffing, quality assurance mechanism in place, for which weightage to be given as 30% towards final evaluation.

The evaluation committee may call the bidders for making presentation, if required. If called, the bidder shall have to arrange his/ her own logistics for participation and the financial implication also need to be borne by them only. The evaluation committee may undertake visits for verification.

The marking shall depend on submitted presentation & presentation before the Committee constituted for the purpose.

Parameter wise marking system is as under:

Sl. No.	Criteria		Maximum Marks
1	Supported by Document	Organisational structure (Staff strength, monitoring mechanism etc. to ensure quality work)	10
2	Supported by Document	Agency having the experience of the value equal to estimated cost put to the tender (Completion/ Performance Certificate is to be provided)	10 marks - for experience from IIM/ IIT/ Any other reputed central govt. academic institution
3	Presentation	Company's completed works, its financials, technical capabilities including plants & Machinery	10
Total Marks			30

Important Note: Bidder who do not submit the presentation, they will be technically disqualified.

c.3 Financial bid: The weightage of marks scored in the financial bid shall contribute 70% towards the final evaluation.

E. List of Documents to be uploaded

While submitting bid, the following documents are to be uploaded:

For Cover-1:

- i) E-payment details towards EMD
- ii) NIT Document duly sign & sealed on each page to be scan and uploaded.
- iii) Certificates of Work Experience
- iv) Copy of CA certificate having UDIN number for annual financial turnover to be uploaded
- v) Audited copy of profit & loss account
- vi) Copy of solvency certificate
- vii) PAN (Permanent Account Number)
- viii) GST (Goods and Services Tax) Registration Certificate
- ix) Certification of Incorporation/ Registration of firm
- x) Latest IT Return
- xi) Presentation prepared by bidder
- xii) Power of Attorney for the person who will sign the agreement (if applicable)
- xiii) Undertaking/ letter of Transmittal as per the format given at Annexure-1
- xiv) Bank Account details
- xv) Undertaking for “Local Content certification” to be submitted in your company’s letter head as per standard format prescribed in Annexure-3.
- xvi) Declaration regarding pending cases (if any) of litigation, arbitration, debarment etc.

Important Note: Bidder who do not submit the presentation, they will be technically disqualified.

For Cover-2:

- i) Schedule of Price Bid in the form of .xls to be filled only on the online portal of CPPP

F. General Instructions to Tenderers

1. **Scope of Work:** Dismantling, Designing & building, refurbishing, renovating, etc with respect to civil, electrical, air-conditioning, audio-visual systems, ELV System comprising of Fire alarm, public address, CCTV etc complete as required and in accordance with the direction of Engineer-in-Charge.

For further details please refer to clause “P” of this tender.

As-built drawing: The contractor will have to provide 04 sets of the “As built Drawing” after completion of the work.

Any other work related to but not specifically mention above, required for completion of the job as per the intent and scope of work.

Important Note: The quoted rate should include the cost of required support/ ladders/ safety nets or any other arrangements for execution of the work at any height and no payment shall be made extra.

2. The Tenderer shall get acquainted with the location of the sites and carefully check the specifications and shall satisfy himself that the material / items offered is complying with the IIM Indore’s requirements and specifications laid down in the tender document or as per the direction of Engineer-in-Charge.
3. **Inspection of materials/work at site**
The IIM Indore’s engineer and /or his representative shall inspect the materials at site after delivery before the same is used in the work. The IIM’s engineer and /or his representative shall have free and full access at any time during execution of the contract to the contractor’s works or site. In case of execution of work for the aforesaid purpose, and IIM’s engineer may require the contractor to make arrangements for inspection of work or any part thereof or any material at his premises or at any other place specified by the IIM Indore’s Engineer.
4. **The IIM Indore’s Engineer shall have the power-**
 - i) To reject the whole/part of the items/ materials/ equipments tendered for inspection, if after inspection of such portion thereof, as he may in his discretion think fit, he is satisfied that the same is unsatisfactory; and
 - ii) To mark the rejected items / materials or parts with a rejection mark so that it may easily be identified if re-submitted.
5. **Maintenance & Guarantee/ Warranty:**
 - a. The rate quoted should be inclusive of charges of all the works & respective associated accessories including SITC of the materials/ equipments at earmarked / specified locations including maintenance during **Defect Liability Period of 01 (ONE) year.**
 - b. The waterproofing shall be guaranteed/ warranted for minimum ten (10) years and 05% amount of the executed quantity of the waterproofing shall be retained as a performance security apart from the guarantee bond in the prescribed format. The aforesaid amount shall be over and above to the security deposit amount of 2.5%. (The amount for waterproofing would be arrived at the rate of latest CPWD DSR and in accordance with the actual quantity executed)

- c. The warranty/ guarantee of the items not mentioned here but is available from OEM then the same shall be extended to the IIM Indore on its name.
- d. During the Defect Liability Period, IIM Indore reserve the right to cross check the performance of any item / material with the minimum performance levels specified in the specifications.
- e. Any damage of the existing structure, building etc. made by the successful bidder during execution of this work shall be made good as it was at his own cost & risk and to the satisfaction of Engineer-in-Charge.

G. Terms of Payment

Terms of Payment for the Work:

The following terms of payment shall be applicable. No variation in the terms of payment will be acceptable. Further, as per Indian laws, income tax, any other tax as applicable shall be deducted at source from the bills and a certificate for the same will be issued to the contractor.

Payment shall be made by IIM Indore to the contractor each month on or before the date fixed by the Engineer-in-Charge for works executed / milestones achieved. The contractor shall prepare computerized bills. The Contractor shall submit three numbers of hard copies and one soft copy in pendrive/hard disk for all bills. All running payments shall be regarded as payments by way of advance against the final payment only and not as payments for work actually done and completed and / or accepted by IIM Indore and shall not preclude the recovery for bad, unsound and imperfect or unskilled work to be removed and taken away and reconstructed or re-erected or be considered as an admission of the due performance of the Contract, or any part thereof, in this respect, or the accruing of any claim, nor shall it conclude, determine or affect in any way the powers of the IIM Indore under these conditions or any of them as to the final settlement and adjustments of the accounts or otherwise, or in any other way vary/ affect the contract.

Note:

- No mobilisation advances shall be paid to the contractor.
- Only one RA Bill will be accepted in a month.
- RA Bills will be paid after achieving the milestones as specified below:

Sl. No.	Milestone Details	% Value of payment (w.r.t. awarded cost)
1	Design & schedule submission- Upon acceptance by the IIM Indore	3%
2	Completion of Dismantling, Brickwork, Plaster Work, waterproofing and Tiling Work	6%
3	Completion of Wall panelling, Acoustic works, False Ceiling Work, painting and Toilet Sanitary Work	7%
4	Supply of Brought-out Items (Chairs, Furniture, HVAC Equipment, AV-related items) - Upon delivery at the site.	31%
5	Work Completion in All Respect and Handing Over	50%
6	Submission of as-built drawings, Guarantee/ warranty certificates, issuance of the Completion Certificate by IIM Indore.	3%
Total		100%

Note: Pro-rata payment against any of the above-mentioned milestones may be made in the interest of the work, as found admissible by the Engineer-in-Charge. However, the contractor will not have any right to claim for the same. The decision of the Engineer-in-Charge, in this regard shall be final and binding to the contractor.

H. Safety Codes

- 1 Suitable scaffolds should be provided for workmen for all works that cannot safely be done from the ground, or from solid construction except such short period work as can be done safely from ladders. When a ladder is used, an extra mazdoor shall be engaged for holding the ladder and if the ladder is used for carrying materials as well suitable footholds and hand-hold shall be provided on the ladder and the ladder shall be given an inclination not steeper than $\frac{1}{4}$ to $1\frac{1}{4}$ horizontal and 1 vertical.)
- 2 Scaffolding of staging more than 3.6 m (12ft.) above the ground or floor, swung or suspended from an overhead support or erected with stationary support shall have a guard rail properly attached or bolted, braced and otherwise secured at least 90 cm. (3ft.) high above the floor or platform of such scaffolding or staging and extending along the entire length of the outside and ends thereof with only such opening as may be necessary for the delivery of materials. Such scaffolding or staging shall be so fastened as to prevent it from swaying from the building or structure.
- 3 Working platforms, gangways and stairways should be so constructed that they should not sag unduly or unequally, and if the height of the platform or the gangway or the stairway is more than 3.6 m (12ft.) above ground level or floor level, they should be closely boarded, should have adequate width and should be suitably fastened as described in (2) above.
- 4 Every opening in the floor of a building or in a working platform shall be provided with suitable means to prevent the fall of person or materials by providing suitable fencing or railing whose minimum height shall be 90 cm. (3ft.)
- 5 Safe means of access shall be provided to all working platforms and other working places. Every ladder shall be securely fixed. No portable single ladder shall be over 9m. (30ft.) in length while the width between side rails in rung ladder shall in no case be less than 29 cm. (11½") for ladder upto and including 3 m. (10 ft.) in length. For longer ladders, this width should be increased at least $\frac{1}{4}$ " for each additional 30 cm. (1 foot) of length. Uniform step spacing of not more than 30 cm shall be kept. Adequate precautions shall be taken to prevent danger from electrical equipment. No materials on any of the sites or work shall be so stacked or placed as to cause danger or inconvenience to any person or the public. The contractor shall provide all necessary fencing and lights to protect the public from accident and shall be bound to bear the expenses of defence of every suit, action or other proceedings at law that may be brought by any person for injury sustained owing to neglect of the above precautions and to pay any damages and cost which may be awarded in any such suit; action or proceedings to any such person or which may, with the consent of the contractor, be paid to compensate any claim by any such person.
 - a) Excavation and Trenching - All trenches 1.2 m. (4ft.) or more in depth, shall at all times be supplied with at least one ladder for each 30 m. (100 ft.) in length or fraction thereof, Ladder shall extend from bottom of the trench to at least 90 cm. (3ft.) above the surface of the ground. The side of the trenches which are 1.5 m. (5ft.) or more in depth shall be stepped back to give suitable slope or securely held by timber bracing, so as to avoid the danger of sides

collapsing. The excavated materials shall not be placed within 1.5 m. (5ft.) of the edges of the trench or half of the depth of the trench whichever is more. Cutting shall be done from top to bottom. Under no circumstances, undermining or undercutting shall be done.

b) Safety Measures for digging bore holes:-

- i. If the bore well is successful, it should be safely capped to avoid caving and collapse of the bore well. The failed and the abandoned ones should be completely refilled to avoid caving and collapse;
- ii. During drilling, Sign boards should be erected near the site with the address of the drilling contractor and the Engineer in-charge of the work;
- iii. Suitable fencing should be erected around the well during the drilling and after the installation of the rig on the point of drilling, flags shall be put 50m around the point of drilling to avoid entry of people;
- iv. After drilling the borewell, a cement platform (0.50m x 0.50m x 1.20m) 0.60m above ground level and 0.60m below ground level should be constructed around the well casing;
- v. After the completion of the borewell, the contractor should cap the bore well properly by welding steel plate, cover the bore well with the drilled wet soil and fix thorny shrubs over the soil. This should be done even while repairing the pump;
- vi. After the borewell is drilled the entire site should be brought to the ground level.

6 Demolition - Before any demolition work is commenced and also during the progress of the work,

- i. All roads and open areas adjacent to the work site shall either be closed or suitably protected.
- ii. No electric cable or apparatus which is liable to be a source of danger or a cable or apparatus used by the operator shall remain electrically charged.
- iii. All practical steps shall be taken to prevent danger to persons employed from risk of fire or explosion or flooding. No floor, roof or other part of the building shall be so overloaded with debris or materials as to render it unsafe.

7 All necessary personal safety equipment as considered adequate by the Engineer-in-Charge should be kept available for the use of the person employed on the site and maintained in a condition suitable for immediate use, and the contractor should take adequate steps to ensure proper use of equipment by those concerned:- The following safety equipment shall invariably be provided.

- i. Workers employed on mixing asphaltic materials, cement and lime mortars shall be provided with protective footwear and protective goggles.
- ii. Those engaged in white washing and mixing or stacking of cement bags or any material which is injurious to the eyes, shall be provided with protective goggles.
- iii. Those engaged in welding works shall be provided with welder's protective eyeshields.

- iv. Stone breaker shall be provided with protective goggles and protective clothing and seated at sufficiently safe intervals.
- v. When workers are employed in sewers and manholes, which are in active use, the contractors shall ensure that the manhole covers are opened and ventilated atleast for an hour before the workers are allowed to get into the manholes, and the manholes so opened shall be cordoned off with suitable railing and provided with warning signals or boards to prevent accident to the public. In addition, the contractor shall ensure that the following safety measure are adhered to :-
 - a. Entry for workers into the line shall not be allowed except under supervision of the JE or any other higher officer.
 - b. At least 5 to 6 manholes upstream and downstream should be kept open for at least 2 to 3 hours before any man is allowed to enter into the manhole for working inside.
 - c. Before entry, presence of Toxic gases should be tested by inserting wet lead acetate paper which changes colour in the presence of such gases and gives indication of their presence.
 - d. Presence of Oxygen should be verified by lowering a detector lamp into the manhole. In case, no Oxygen is found inside the sewer line, workers should be sent only with Oxygen kit.
 - e. Safety belt with rope should be provided to the workers. While working inside the manholes, such rope should be handled by two men standing outside to enable him to be pulled out during emergency.
 - f. The area should be barricaded or cordoned off by suitable means to avoid mishaps of any kind. Proper warning signs should be displayed for the safety of the public whenever cleaning works are undertaken during night or day.
 - g. No smoking or open flames shall be allowed near the blocked manhole being cleaned.
 - h. The malba obtained on account of cleaning of blocked manholes and sewer lines should be immediately removed to avoid accidents on account of slippery nature of the malba.
 - i. Workers should not be allowed to work inside the manhole continuously. He should be given rest intermittently. The Engineer-in-Charge shall decide the time up to which a worker may be allowed to work continuously inside the manhole.
 - j. Gas masks with Oxygen Cylinder should be kept at site for use in emergency.
 - k. Air-blowers should be used for flow of fresh air through the manholes. Whenever called for, portable air blowers are recommended for ventilating the manholes. The Motors for these shall be vapour proof and of totally enclosed type. Non sparking gas engines also could be used but they should be placed at least 2 metres away from the opening and on the leeward side protected from wind so that they will not be a source of friction on any inflammable gas that might be present.
 - l. The workers engaged for cleaning the manholes/sewers should be properly trained before allowing to work in the manhole.

- m. The workers shall be provided with Gumboots or non-sparking shoes bump helmets and gloves non sparking tools safety lights and gas masks and portable air blowers (when necessary). They must be supplied with barrier cream for anointing the limbs before working inside the sewer lines.
- n. Workmen descending a manhole shall try each ladder stop or rung carefully before putting his full weight on it to guard against insecure fastening due to corrosion of the rung fixed to manhole well.
- o. If a man has received a physical injury, he should be brought out of the sewer immediately and adequate medical aid should be provided to him.
- p. The extent to which these precautions are to be taken depend on individual situation but the decision of the Engineer-in-Charge regarding the steps to be taken in this regard in an individual case will be final.
- vi. The Contractor shall not employ men and women below the age of 18 years on the work of painting with products containing lead in any form. Wherever men above the age of 18 are employed on the work of lead painting, the following precaution should be taken:-
 - a. No paint containing lead or lead products shall be used except in the form of paste or ready made paint.
 - b. Suitable face masks should be supplied for use by the workers when paint is applied in the form of spray or a surface having lead paint is dry rubbed and scrapped.
 - c. Overalls shall be supplied by the contractors to the workmen and adequate facilities shall be provided to enable the working painters to wash during and on the cessation of work.
- vii. Workmen executing work on scaffolds or other structures above specified height shall be provided with full body harness and fall arresters.
- 8 An additional clause (viii)(i) of Central Public Works Department Safety Code (iv) the Contractor shall not employ women and men below the age of 18 on the work of painting with product containing lead in any form, wherever men above the age of 18 are employed on the work of lead painting, the following principles must be observed for such use :
 - i. White lead, sulphate of lead or product containing these pigment, shall not be used in painting operation except in the form of pastes or paint ready for use.
 - ii. Measures shall be taken, wherever required in order to prevent danger arising from the application of a paint in the form of spray.
 - iii. Measures shall be taken, wherever practicable, to prevent danger arising out of from dust caused by dry rubbing down and scraping.
 - iv. Adequate facilities shall be provided to enable working painters to wash during and on cessation of work.
 - v. Overall shall be worn by working painters during the whole of working period.
 - vi. Suitable arrangement shall be made to prevent clothing put off during working hours being spoiled¹³ by painting materials.

- vii. Cases of lead poisoning and suspected lead poisoning shall be notified and shall be subsequently verified by medical man appointed by competent authority of IIM Indore.
 - viii. IIM Indore may require, when necessary medical examination of workers.
 - ix. Instructions with regard to special hygienic precautions to be taken in the painting trade shall be distributed to working painters.
- 9 When the work is done near any place where there is risk of drowning, all necessary equipments should be provided and kept ready for use and all necessary steps taken for prompt rescue of any person in danger and adequate provision, should be made for prompt first aid treatment of all injuries likely to be obtained during the course of the work.
- 10 Use of hoisting machines and tackle including their attachments, anchorage and supports shall conform to the following standards or conditions :-
- i.
 - (a) These shall be of good mechanical construction, sound materials and adequate strength and free from patent defects and shall be kept repaired and in good working order.
 - (b) Every rope used in hoisting or lowering materials or as a means of suspension shall be of durable quality and adequate strength, and free from patent defects.
 - ii. Every crane driver or hoisting appliance operator, shall be properly qualified and no person under the age of 21 years should be in charge of any hoisting machine including any scaffolding winch or give signals to operator.
 - iii. In case of every hoisting machine and of every chain ring hook, shackle swivel and pulley block used in hoisting or as means of suspension, the safe working load shall be ascertained by adequate means. Every hoisting machine and all gear referred to above shall be plainly marked with the safe working load. In case of a hoisting machine having a variable safe working load each safe working load and the condition under which it is applicable shall be clearly indicated. No part of any machine or any gear referred to above in this paragraph shall be loaded beyond the safe working load except for the purpose of testing.
 - iv. In case of departmental machines, the safe working load shall be notified by the Electrical Engineer-in-Charge. As regards contractor's machines the contractors shall notify the safe working load of the machine to the Engineer-in-Charge whenever he brings any machinery to site of work and get it verified by the Electrical Engineer concerned.
- 11 Motors, gearing, transmission, electric wiring and other dangerous parts of hoisting appliances should be provided with efficient safeguards. Hoisting appliances should be provided with such means as will reduce to the minimum the risk of accidental descent of the load. Adequate precautions should be taken to reduce to the minimum the risk of any part of a suspended load becoming accidentally displaced. When workers are employed on electrical installations which are already energized, insulating mats, wearing apparel, such as gloves, sleeves and boots as may be necessary should be provided. The worker should not wear any rings, watches and carry keys or other materials which are good conductors of electricity.

- 12 All scaffolds, ladders and other safety devices mentioned or described herein shall be maintained in safe condition and no scaffold, ladder or equipment shall be altered or removed while it is in use. Adequate washing facilities should be provided at or near places of work.
- 13 These safety provisions should be brought to the notice of all concerned by display on a notice board at a prominent place at work spot. The person responsible for compliance of the safety code shall be named therein by the contractor.
- 14 To ensure effective enforcement of the rules and regulations relating to safety precautions the arrangements made by the contractor shall be open to inspection by the Labour Officer or Engineer-in-Charge of the department or their representatives.
- 15 For Electronics works execution relevant safety standard of Govt. of India/ CPWD need to be followed.
- 16 Notwithstanding the above clauses from (1) to (16), there is nothing in these to exempt the contractor from the operations of any other Act or Rule in force in the Republic of India.

I.	Fire Safety
-----------	--------------------

This will be as per the Fire Safety codes of the CPWD to the extent applicable to the IIM Indore. Decision in this regard will be governed by the competent authority of IIM Indore which shall be final and binding to the contractor.

J.	Integrity Pact
-----------	-----------------------

INTEGRITY PACT

To,

..... ,
..... ,
.....

Sub: NIT No. IIMI/Project/02/2025/167 File No. 513 for the work of “NIT for Renovation & Refurbishing of Director’s Secretariat at IIM Indore”

Dear Sir,

It is here by declared that IIM Indore is committed to follow the principle of transparency, equity and competitiveness in public procurement. The subject Notice Inviting Tender (NIT) is an invitation to offer made on the condition that the Bidder will sign the integrity Agreement, which is an integral part of tender/bid documents, failing which the tenderer/bidder will stand disqualified from the tendering process and the bid of the bidder would be summarily rejected.

This declaration shall form part and parcel of the Integrity Agreement and signing of the same shall be deemed as acceptance and signing of the Integrity Agreement on behalf of the IIM Indore.

Yours faithfully

Chief Officer Engineering

INTEGRITY AGREEMENT

This Integrity Agreement is made at on this day of 2025
BETWEEN

The Director, IIM Indore represented through Chief Officer Engineering, IIM Indore, (Hereinafter referred as the IIM Indore, Prabandh Shikhar, Rau-Pithampur Road, Indore “Principal/Owner”, which expression shall unless repugnant to the meaning or context hereof include its successors and permitted assigns)

AND

.....
..... (Name and Address of the Individual/ firm/ Company)

Through
(Hereinafter referred to as the (Details of duly authorized signatory) “Bidder/Contractor” and which expression shall unless repugnant to the meaning or context hereof include its successors and permitted assigns)

Preamble

WHEREAS the Principal / Owner has floated the Tender IIMI/Project/02/2025/167 File No. 513 (hereinafter referred to as “Tender/Bid”) and intends to award, under laid down organizational procedure, contract for “Renovation & Refurbishing of Director’s Secretariat at IIM Indore” hereinafter referred to as the “Contract”.

AND WHEREAS the Principal/Owner values full compliance with all relevant laws of the land, rules, regulations, economic use of resources and of fairness/transparency in its relation with its Bidder(s) and Contractor(s).

AND WHEREAS to meet the purpose aforesaid both the parties have agreed to enter into this Integrity Agreement (hereinafter referred to as “Integrity Pact” or “Pact”), the terms and conditions of which shall also be read as integral part and parcel of the Tender/Bid documents and Contract between the parties.

NOW, THEREFORE, in consideration of mutual covenants contained in this Pact, the parties hereby agree as follows and this Pact witnesses as under:

Article 1: Commitment of the Principal/Owner

(1) The Principal/Owner commits itself to take all measures necessary to prevent corruption and to observe the following principles:

(a) No employee of the Principal/Owner, personally or through any of his/her family members, will in connection with the Tender, or the execution of the Contract, demand, take a promise for or accept, for self or third person, any material or immaterial benefit which the person is not legally entitled to.

(b) The Principal/Owner will, during the Tender process, treat all Bidder(s) with equity and reason. The Principal/Owner will, in particular, before and during the Tender process, provide to all Bidder(s) the same information and will not provide to any Bidder(s) confidential / additional information through which the Bidder(s) could obtain an advantage in relation to the Tender process or the Contract execution.

(c) The Principal/Owner shall endeavour to exclude from the Tender process any person, whose conduct in the past has been of biased nature.

(2) If the Principal/Owner obtains information on the conduct of any of its employees which is a criminal offence under the Indian Penal code

(IPC)/Prevention of Corruption Act, 1988 (PC Act) or is in violation of the principles herein mentioned or if there be a substantive suspicion in this regard, the Principal/Owner will inform the Chief Vigilance Officer and in addition can also initiate disciplinary actions as per its internal laid down policies and procedures.

Article 2: Commitment of the Bidder(s)/Contractor(s)

(1) It is required that each Bidder/Contractor (including their respective officers, employees and agents) adhere to the highest ethical standards, and report to the IIM Indore / Department all suspected acts of fraud or corruption or Coercion or Collusion of which it has knowledge or becomes aware, during the tendering process and throughout the negotiation or award of a contract.

(2) The Bidder(s)/Contractor(s) commits himself to take all measures necessary to prevent corruption. He commits himself to observe the following principles during his participation in the Tender process and during the Contract execution:

(a) The Bidder(s)/Contractor(s) will not, directly or through any other person or firm, offer, promise or give to any of the Principal/Owner's employees involved in the Tender process or execution of the Contract or to any third person any material or other benefit which he/she is not legally entitled to, in order to obtain in exchange any advantage of any kind whatsoever during the Tender process or during the execution of the Contract.

(b) The Bidder(s)/Contractor(s) will not enter with other Bidder(s) into any undisclosed agreement or understanding, whether formal or informal. This applies in particular to prices, specifications, certifications, subsidiary contracts, submission or non-submission of bids or any other actions to restrict competitiveness or to cartelize in the bidding process.

(c) The Bidder(s)/Contractor(s) will not commit any offence under the relevant IPC/PC Act. Further the Bidder(s)/Contractor(s) will not use improperly, (for the purpose of competition or personal gain), or pass on to others, any information or documents provided by the Principal/Owner as part of the business relationship, regarding plans, technical proposals and business details, including information contained or transmitted electronically. (d) The Bidder(s)/Contractor(s) of foreign origin shall disclose the names and addresses of agents/ representatives in India, if any. Similarly

Bidder(s)/Contractor(s) of Indian Nationality shall disclose names and addresses of foreign agents/representatives, if any. Either the Indian agent on behalf of the foreign principal or the foreign principal directly could bid in a tender but not both. Further, in cases where an agent participate in a tender on behalf of one manufacturer, he shall not be allowed to quote on behalf of another manufacturer along with the first manufacturer in a subsequent/parallel tender for the same item.

(d) The Bidder(s)/Contractor(s) will, when presenting his bid, disclose any and all payments he has made, is committed to or intends to make to agents, brokers or any other intermediaries in connection with the award of the Contract.

(3) The Bidder(s)/Contractor(s) will not instigate third persons to commit offences outlined above or be an accessory to such offences.

(4) The Bidder(s)/Contractor(s) will not, directly or through any other person or firm indulge in fraudulent practice means a willful misrepresentation or omission of facts or submission of fake/forged documents in order to induce public official to act in reliance thereof, with the purpose of obtaining unjust advantage by or causing damage to justified interest of others and/or to influence the procurement process to the detriment of the IIM Indore interests.

(5) The Bidder(s)/Contractor(s) will not, directly or through any other person or firm use Coercive Practices (means the act of obtaining something, compelling an action or influencing a decision through intimidation, threat or the use of force directly or indirectly, where potential or actual injury may befall upon a person, his/her reputation or property to influence their participation in the tendering process).

Article 3: Consequences of Breach

Without prejudice to any rights that may be available to the Principal/Owner under law or the Contract or its established policies and laid down procedures, the Principal/Owner shall have the following rights in case of breach of this Integrity Pact by the Bidder(s)/Contractor(s) and the Bidder/ Contractor accepts and undertakes to respect and uphold the Principal/Owner's absolute right:

(1) If the Bidder(s)/Contractor(s), either before award or during execution of Contract has committed a transgression through a violation of Article 2 above or in any other form, such as to put his reliability or credibility in question, the Principal/Owner after giving 14 days notice to the contractor shall have powers to disqualify the Bidder(s)/Contractor(s) from the Tender process or terminate/determine the Contract, if already executed or exclude the Bidder/Contractor from future contract award processes. The imposition and duration of the exclusion will be determined by the severity of transgression and determined by the Principal/Owner. Such exclusion may be forever or for a limited period as decided by the Principal/Owner.

(2) Forfeiture of EMD/Performance Guarantee/Security Deposit: If the Principal/Owner has disqualified the Bidder(s) from the Tender process prior to the award of the Contract or terminated/determined the Contract or has accrued the right

to terminate/determine the Contract according to Article 3(1), the Principal/Owner apart from exercising any legal rights that may have accrued to the Principal/Owner, may in its considered opinion forfeit the entire amount of Earnest Money Deposit, Performance Guarantee and Security Deposit of the Bidder/Contractor.

(3) Criminal Liability: If the Principal/Owner obtains knowledge of conduct of a Bidder or Contractor, or of an employee or a representative or an associate of a Bidder or Contractor which constitutes corruption within the meaning of IPC Act, or if the Principal/Owner has substantive suspicion in this regard, the Principal/Owner will inform the same to law enforcing agencies for further investigation.

Article 4: Previous Transgression

(1) The Bidder declares that no previous transgressions occurred in the last 5 years with any other Company in any country confirming to the anticorruption approach or with Central Government or State Government or any other Central/State Public Sector Enterprises in India that could justify his exclusion from the Tender process.

(2) If the Bidder makes incorrect statement on this subject, he can be disqualified from the Tender process or action can be taken for banning of business dealings/holiday listing of the Bidder/Contractor as deemed fit by the Principal/ Owner.

(3) If the Bidder/Contractor can prove that he has resorted / recouped the damage caused by him and has installed a suitable corruption prevention system, the Principal/Owner may, at its own discretion, revoke the exclusion prematurely.

Article 5: Equal Treatment of all Bidders/Contractors/Subcontractors

(1) The Bidder(s)/Contractor(s) undertake(s) to demand from all subcontractors a commitment in conformity with this Integrity Pact. The Bidder/Contractor shall be responsible for any violation(s) of the principles laid down in this agreement/Pact by any of its Subcontractors/sub-vendors.

(2) The Principal/Owner will enter into Pacts on identical terms as this one with all Bidders and Contractors.

(3) The Principal/Owner will disqualify Bidders, who do not submit, the duly signed Pact between the Principal/ Owner and the bidder, along with the Tender or violate its provisions at any stage of the Tender process, from the Tender process.

Article 6- Duration of the Pact

This Pact begins when both the parties have legally signed it. It expires for the Contractor/Vendor 12 months after the completion of work under the contract or till the continuation of defect liability period, whichever is more and for all other bidders, till the Contract has been awarded. If any claim is made/lodged during the time, the same shall be binding and continue to be valid despite the lapse of this Pacts as specified above, unless it is discharged/determined by the Competent Authority, IIM Indore.

Article 7- Other Provisions

(1) This Pact is subject to Indian Law, place of performance and jurisdiction is the Headquarters of the Division of the Principal/Owner, who has floated the Tender.

(2) Changes and supplements need to be made in writing. Side agreements have not been made.

(3) If the Contractor is a partnership or a consortium, this Pact must be signed by all the partners or by one or more partner holding power of attorney signed by all partners and consortium members. In case of a Company, the Pact must be signed by a representative duly authorized by board resolution.

(4) Should one or several provisions of this Pact turn out to be invalid; the remainder of this Pact remains valid. In this case, the parties will strive to come to an agreement to their original intensions.

(5) It is agreed term and condition that any dispute or difference arising between the parties with regard to the terms of this Integrity Agreement / Pact, any action taken by the Owner/Principal in accordance with this Integrity Agreement/ Pact or interpretation thereof shall not be subject to arbitration.

Article 8- LEGAL AND PRIOR RIGHTS

All rights and remedies of the parties hereto shall be in addition to all the other legal rights and remedies belonging to such parties under the Contract and/or law and the same shall be deemed to be cumulative and not alternative to such legal rights and remedies aforesaid. For the sake of brevity, both the Parties agree that this Integrity Pact will have precedence over the Tender/Contact documents with regard any of the provisions covered under this Integrity Pact.

IN WITNESS WHEREOF the parties have signed and executed this Integrity Pact at the place and date first above mentioned in the presence of following witnesses:

.....
(For and on behalf of Principal/Owner)

.....
(For and on behalf of Bidder/Contractor)

WITNESSES:

1.....
(Signature, name and address)

2.....
(Signature, name and address)

Place:
Dated:

K. Agreement

Format for Agreement

THIS AGREEMENT made at Indore on the ____ day of ____ 2025 between **Indian Institute of Management Indore Rau- Pithampur Road, Indore** (hereinafter called "**The IIM INDORE**" which expression shall, unless repugnant to the context or meaning thereof, include its administrators, successors and assigns) of the one part AND _____

(herein after called "**The Contractor**" which expression shall, unless repugnant to the context or meaning thereof, include its successors and permitted assigns) of the other part.

WHEREAS

The IIM INDORE is desirous of carrying out the work of "**Renovation & Refurbishing of Director's Secretariat at IIM Indore**" issued vide NIT No.: **IIMI/Project/02/2025/167 File No. 513**

The Works are to be executed as per the scope of work, technical specifications, drawings etc. as is mentioned in the tender document for tendered rate amounting to Rs. _____.

The Contractor has agreed to execute the said works subject to the provisions hereinafter contained and subject also to General Conditions of Contract, Special conditions of contract, Safety Code, Model Rules for the protection of health and other arrangements for workers, Specifications, Preambles and Schedule of Quantities and erection & furnishing schedule (all of which are hereinafter collectively referred to as the 'said tender conditions') and strictly in accordance with the Scope of work annexed hereto at or for the respective rates set out in the Schedule of Quantities amounting to the sum as there under arrived at or such other sums as shall become payable there under (hereinafter referred to as the said tendered amount).

NOW IT IS HEREBY AGREED AS FOLLOWS: -

1. In consideration of the said tendered amount to be paid by The IIM INDORE to the Contractor at the time and in the manner set forth in the said tender conditions and in accordance with the Schedule of Payments to execute and complete the work shown upon the said Drawings strictly in accordance with the specifications and Schedule of Quantities.
2. The said tender conditions, scope of work and the annexure-1 hereto shall be read and considered as forming part of this contract and the parties hereto

shall respectfully abide by to the said conditions and perform the agreement on their part respectively contained in the said conditions.

3. The approved drawings if any, notice inviting tenders technical specification etc. shall also form the basis of this contract.
4. This contract is neither a Lump sum Contract, nor a piece work contract, but is a contract on Turn-Key basis to be carried out and to be paid for according to the Schedule of Payments at the rates contained in the Schedule of Quantities.
5. The contract herein contained shall comprise not only the works mentioned above but all subsidiary works connected therewith within the same site as may be ordered to be done from time to time by the said Engineer-In-charge for the time being, even if such work may not be shown on the said Drawings or described in the said Specifications and Schedule of Quantities.
6. The IIM INDORE reserves to themselves the right of altering the drawings and the nature of the work by adding to or omitting from the scope of work any item of work or portions of the same without prejudice to this contract.
7. Time shall be considered as the essence of this contract and the Contractor hereby agrees to commence the work as mentioned in LOI/ work order and shall complete the entire work within the stipulated time limit.
8. All payments by the IIM INDORE under this contract shall be made only at Indore.
9. All disputes arising out of or in any way connected with this contract shall be deemed to have arisen in respect of IIM Indore and Director IIM Indore only shall have jurisdiction to determine the same.
10. That the contract and several parts of this contract have been read by the contractor and fully understood by him. The contractor shall not be entitled for payment beyond tendered quantities unless ordered specifically by written instructions of the Engineer-in-charge IIM INDORE.
11. This contract shall be signed in duplicate, the original whereof shall be kept in the custody of the IIM INDORE and the duplicate with the Contractor.
12. The Engineer-in-Charge may, without prejudice to his any other right or remedy against the contractor in respect of any delay, non-commencement, inferior workmanship, any claim for damages and/ or any other provisions of this contract or otherwise, and whether the date for completion has or has not elapsed, by notice in writing determine/ repudiate the contract.

IN WITNESS WHEREOF the IIM INDORE has set his hands hereunto and duplicate hereof through his duly authorized official and the Contractor has caused these presents and duplicate hereof under his common seal by his duly authorized representative at the place and on the date month and year first herein above written.

SIGNED, SEALED AND DELIVERED by IIM INDORE, by the hand of

Signature:

Name:

Designation:

IN THE PRESENCE OF

(1) Signature:

Name:

Address:

(2) Signature:

Name:

Address:

SIGNED, SEALED AND DELIVERED BY the Contractor **M/s** _____
_____.

Signature:

Name:

Designation:

IN THE PRESENCE OF

(1) Signature:

Name:

Address:

(2) Signature:

Name:

Address:

L.	General Conditions of Contract
-----------	---------------------------------------

This will be as per the General Conditions of Contract (GCC) of the CPWD to the extent applicable to the IIM Indore. Decision in this regard will be governed by the Engineer-in-Charge which shall be final and binding to the contractor.

M.	Proforma of Schedules
-----------	------------------------------

SCHEDULE “A”

Schedule of quantities - as per Financial Bid.

SCHEDULE ‘B”

Schedule of materials to be issued to the contractor. - Deleted.

SCHEDULE “C”

Tools and plants to be hired to the contractor - Deleted.

SCHEDULE “D”

Extra schedule for specific requirements/document for the work, if any. - To be intimated later if required.

SCHEDULE “E”

Reference to General Conditions of contract laid down in the tender document.

Name of Work	“Renovation & Refurbishing of Director’s Secretariat at IIM Indore”
Estimated Cost Put to Tender (Excluding Goods & Service Tax)	Rs. 2,39,21,753/- (Rupees Two Crore Thirty-Nine Lakh Twenty One Thousand Seven Hundred Fifty Three Only)
EMD Amount	Rs. 4,78,435/- (Rs. Four Lakh Seventy Eight Thousand Four Hundred Thirty Five Only) by e-payment through electronic mode (NEFT/ RTGS)
Performance Guarantee	5 (Five) % of tendered value
Security Deposit	2.5 % of tendered value

SCHEDULE “F”

General Rules & Directions

- Officer inviting tender: The Chief Officer Engineering, IIM Indore on behalf of the Director, IIM Indore

Definitions:

2(v)	Engineer-in-Charge	Chief Officer Engineering, IIM Indore
2(viii)	Accepting Authority	Director, IIM Indore

2(x)	Percentage on cost of materials and labour to cover all overheads and profits	15%
2(xi)	Standard Schedule of Rates	CPWD DSR 2023 for civil items, CPWD DSR 2022 E&M for electrical and electronics items
2(xii)	Department	Project Department, IIM Indore

Clause 1

- i. Time allowed for submission of Performance Guarantee from the date of issue of letter of acceptance : **7 Days**
- ii. Maximum allowable extension with late fee @ 0.1% per day of Performance Guarantee amount beyond the period provided in (i) above : **7 days**

Clause 2

- i. Authority for fixing compensation under clause 2. : Director, IIM Indore
- ii. Compensation for delay of work : 5% (Five Percent) per month of delay to be computed on per day basis

Provided always that the total amount of compensation for delay to be paid under this Condition shall not exceed 10% of the Tendered Value of work or of the Tendered Value of the item or group of items of work for which a separate period of completion is originally given.

Clause 2A

Whether Clause 2A shall be applicable : **No.**

Clause 5

Number of days from the date of issue of letter of acceptance for reckoning date of start: **As per LOI/ WO.**

Total time allowed for completion of work: 90 Days

Authority to decide:

- (i) Extension of time : Director, IIM Indore
- (ii) Shifting of date of start in case of delay in handing over of site : Chief Officer Engineering, IIM Indore

Clause 7

Gross work to be done together with net payment /adjustment of advances for material collected, if any, since the last such payment for being eligible to interim

payment: **As per tender.**

Clause 10A

List of testing equipment to be provided by the contractor at site lab.- **Deleted.**

Clause 10 C - Deleted.

Clause 10 CC - Deleted

Clause 11

Specifications to be followed for execution of work:

Relevant BIS code, CPWD Specifications with up-to-date correction slips and OEMs specifications as applicable and or as per the direction of Engineer-in-Charge.

Clause 25

Resolution of Disputes and Disagreements

If any dispute or difference of any kind whatsoever shall arise between the parties in connection with or arising out of this Agreement or out of the breach termination or invalidity of this Agreement thereof, the parties shall resolve them by resorting to the following:

- The Party shall attempt within a period of 7 days after receipt of notice by the other party of the existence of a dispute, settle such dispute in the first instance by mutual discussions between the parties represented by the **Contractor** and Chief Officer Engineering of the institute.
- If the dispute cannot be settled by mutual discussion within 7 days the matter shall be referred to the Director IIM Indore, whose decision shall be full, final & binding on the parties.

Clause 32

Requirement of Technical Representative(s) and recovery Rate

Sl no	Minimum Qualification of Technical Representative	Designation	Minimum Experience (In Years)	Number of Engineers/ Representatives	Rate at which recovery shall be made from the contractor in the event of not fulfilling provision of clause 32	
					Figures	Words

1	Graduate Engineer/ Diploma Engineer / Interior Designer/Architect	Project Manager cum Planning/ Quality / site / billin Engineer	minimum 2 or 5 respectively	1+1	Rs. 15,000/- per month	Rupees fifteen Thousand only
---	--	--	-----------------------------------	-----	------------------------------	---------------------------------

Assistant Engineers retired from Government services that are holding Diploma will be treated at par with Graduate Engineers.

N. Special Conditions of Contract

1. The tenderer shall acquaint himself with the proposed site of work.
2. If for any reasons, any part of the site is not available temporarily for some time for part of the work under the contract, the agreed construction schedule shall be suitably modified and contractor shall diligently divert his men and materials to utilize them appropriately, profitably and no claim of damages whatsoever shall be entertained on this account. However, the contractor shall be allowed extension of time for completing the work as deemed fit by the competent authority. The contractor shall also not be entitled to any compensation for any loss suffered by him and revision in the rates quoted by him.
 - (a) On account of delay in commencing the work by the contractor.
 - (b) On account of reduction in the scope of work.
 - (c) On account of suspension of work or abandoned after award of work.
3. The contractor shall make his own arrangement for tapping electric connection required for execution of work and necessary deductions from the payments will be affected by IIM Indore.
4. On account of security consideration, some restrictions may be imposed by the security staff on the working and/ movement of men and materials etc. The contractor shall be bound to follow all such restrictions/ instructions and he shall organise his work accordingly. No claim on this account, whatsoever, shall be payable.
5. The contractor shall take all precautions to avoid accidents by exhibiting necessary caution boards day and night, speed limit boards, red flags, red lights and providing barriers. He shall be responsible for all damages and accidents caused to existing/ new work due to negligence on his part. No hindrance shall be caused to traffic during the execution of the work.
6. The contractor shall be responsible for the watch and ward of all materials brought by the contractor to site against pilferage and breakage during the period of installation and thereafter till the works are physically handed over to the department.

7. The contractor shall take all preventive measures against any damage caused by rain, snowfall, floods or any other natural calamity, whatsoever during the execution of the work. The contractor shall be fully responsible for any damage to the Owners property and to the work for which the payment has been advanced to him under the contract. However, the contractor shall maintain an equal to the payment received against the work done, at his own cost. This will also cover the defect liability period. This shall be favouring the Director, Indian Institute of Management Indore. Nothing extra on this account shall be payable to the contractor for maintaining such insurance Policy.
8. The work will be carried out in the manner complying, in all respects, with the requirements of relevant bye-laws of the local body under the jurisdiction of which the work is to be executed or as directed by the Engineer-in-Charge and nothing extra shall be paid on this account.
9. The contractor shall comply with proper and legal orders and directions of the local or public authority or municipality and abide by their rules and regulations and pay all fees and charges which may be liable.
10. The contractor shall give due notices to Municipal, Police and/or other authorities that may be required under the law/rules under force in the area and obtain all requisite licenses for temporary obstructions / enclosures and pay all charges which may be leviable on account of his execution of work under the agreement. Nothing extra shall be payable on this account.
11. All materials to be incorporated in the work shall be arranged by the contractor and shall be in accordance with the specifications laid down.
12. The tenderer shall use materials bearing ISI Certification Mark unless otherwise specified or allowed in writing by the Engineer-in-Charge. Any material banned by the department shall not be used in the work.
13. The contractor shall submit to the Engineer-in-charge samples of all materials for approval. Such samples of materials which affect aesthetics of the work shall also be got approved from the Engineer-in-charge of the project before procuring bulk supplies. These approved samples shall be preserved and retained in the custody of the Engineer-in-charge as standards of materials till the completion of the work. The cost of such samples shall be borne by the Contractor and nothing shall be payable on this account over the Agreement rates.
14. The contractor shall be required to get all the necessary mandatory and other tests as per the specifications/ IS codes, carried out on materials/ work from an approved laboratory as per the direction of the Engineer-in-charge. The testing charges and conveyance from the site shall be borne by the contractor.
15. In case any material / work is found sub-standard the same shall be rejected by the Engineer-in-charge/ Architect representative and the same shall be removed from the site of work within 48 hours, failing which the same shall be got removed by the Engineer-in-charge at the risk and cost of the contractor without giving any further notice and time.
16. In order to ensure quality of work during its execution, the Engineer-in-charge representative may require samples for mandatory or routine testing of materials. All costs of these samples, their packaging, conveyance from the site to the testing laboratory and return, shall be borne by the contractor.

17. Even ISI marked materials may be subjected to quality test at the discretion of the Engineer-in-charge/ Architect. Whenever ISI marked materials are brought to the site of work the contractor shall, if required by the Engineer-in-charge/ Architect, furnish manufacturer's test certificate or test certificate from approved testing laboratory to establish that the materials procured by the contractor, satisfy the provisions of relevant ISI codes. The testing charges shall be borne by the contractor. However cement/steel will be necessarily tested before start of work and also during the execution of work as per the requirements of specifications and will not be used till test certificates are obtained and approved by Engineer-in-Charge/ Architect.
18. The contractor shall supply free of charge the material required for testing. The cost of tests shall be borne by the contractor.
19. The work shall be executed and measured in metric system. The metric dimensions given in the schedule of quantities and drawing etc. shall be followed. (The dimension in FPS units wherever indicated are for guidance only) The figures in the drawings shall be followed.
20. The contractor shall be responsible for completing the work and for satisfying all terms and conditions of the Contract without any extra payment over his quoted rates unless otherwise specified. The contractor shall quote his rate for various items of work accordingly and no claim whatsoever shall be entertained for any incidental or extra work involved in the execution of the work as per nomenclature of the item and the specifications indicated in the tender documents.
21. Subject to the nomenclature of the item as per schedule of quantities, the specification indicated in the tender documents, the rates quoted shall include cost of all materials including royalty and taxes if any, labour, sundry inputs, execution of work at all heights, levels, pattern and design for all leads, lifts and depths including overhead charges and contractor's profit. Nothing extra shall be paid on this account.
22. The rate shall be inclusive of making design, pattern and execution of work as per Architectural and structural drawings, at all levels and heights.
23. The rates shall be inclusive of making any holes in walls/ RCC work for fixing any fixture/ frame work and making good the structure to its original shape and finish.
24. Other agencies doing works related with this project will also simultaneously execute the works and the contractor shall afford necessary co-ordination for un-hindered completion of these sub-works.
25. The contractor shall continue to maintain watch and ward to safeguard the Owner's property in his possession until the same is formally handed over as per directions of the Engineer-in-charge. Nothing extra over agreement rates shall be paid on this account.
26. The quantities of various items incorporated in the tender are approximate. However, the payments shall be made to the contractors on the basis of actual measurements taken at site.
27. The contractor shall protect the adjoining buildings or works and the work under execution from fire and shall make adequate arrangements for fire protection

and firefighting and if any property is damaged, by fire due to the negligence of the contractor, the same shall be made good by the contractor at his own cost, to the entire satisfaction of Engineer-in-charge.

28. The contractor shall provide adequate lighting arrangements as approved by the Engineer-in-charge for carrying out the work during night time, if so required and also provide all other facilities for the labour employed to carry out the work as per direction of Engineer-in-Charge.
29. In order to achieve the targeted date of completion the contractor may have to work in multiple shifts, round the clock including public and gazetted holidays and nothing extra shall be paid on this account.
30. The contractor shall get the samples of all the materials to be used, in the work approved from Engineer-in-Charge and Architect before going for bulk procurement. Bulk procurement shall be taken up only after obtaining approval from the Engineer-in-charge. Any delay in getting the samples approved shall be contractor's responsibility.
31. All materials, articles and workmanship shall be of respective best quality and kind for the class described in the schedule of quantities and specifications. All materials, so used in different items of work shall be subject to the approval of the Engineer-in-charge and Architect.
32. The contractor shall be responsible for all statutory provisions and deductions towards ESI, PF or any other, as the case may be or any other levies and taxes shall be borne by the contractors. The TDS and Contract Tax or any other statutory levels/taxes incorporated from time to time shall be deducted progressively from the running account bills, as applicable at the time of payment. No claim in this regard shall be entertained.
33. The contractor is supposed to abide the minimum wages act, and shall produce all records to the Engineer-in-charge or any other statutory authority as and when called for. The Engineer-in-charge does not hold any responsibility on account of any lapses in this regard.
34. No extension of time shall be granted to the contractor on account of rains or inclement weather conditions.
 - (a) For any clarification/ doubt, the Institute may organize regular meetings with Contractor. The contractor shall attend such meetings invariably as and when required.
 - (b) In respect of the work of other agencies, where the commencement or progress of such work of any other agency is dependent upon the completion of particular portions of the contractor's work or generally upon the contractor maintaining progress in accordance with the approved coordinated construction programme, it shall be the responsibility of the Contractor to complete such portions and maintain such progress.
 - (c) Should any difference arise between the contractor and the other agencies, these shall immediately be brought to the attention of the Engineer-in-Charge who after reviewing the matters causing the differences will give their decision which shall be final and binding on the contractor.
35. All spaces allotted to the contractor as described above shall be vacated and all structures removed from site at any time as and when required and directed by

the Engineer-in-charge, unconditionally and without any reservation. The Engineer-in-charge will not be obliged to give any reason for such removal. Upon receiving instructions to vacate the space, the contractor shall immediately remove all his structures, materials, etc. from the sources and clear and clean-up the site to the satisfaction of the Engineer-in-charge.

36. It shall be the responsibility of the Contractor to safeguard the site and ensure that no illegal encroachments are made by outside elements within the area allotted to the contractor. Upon completion of the work or earlier as required by Engineer-in-Charge, the contractor shall vacate the land totally without any reservation.
37. The contractor will arrange to erect, at his own cost, barbed wire or other appropriate fence around the infrastructure site, with entry/exit gates at suitable points. The contractor shall, at his own cost, provide and erect suitable fencing around the spaces allotted to him at the infrastructure sites to ensure the security of his men. Materials and equipment within the sites and in relation to other contractors who will also be allotted spaces at above sites.
38. The security of workmen, materials, equipment stores etc. within the area allotted to the contractor shall be the responsibility of the contractor.
39. The site of work shall have required equipments for various tests at site by the contractor at his own cost and nothing extra shall be payable on this account.
40. The quantities indicated are for guidance only however it may vary to any extent and the contractor should not have any financial or other implications for such variations. The owner reserves to reduce the scope of work of any item if the contractor fails to deliver the works in time and the contractor shall not ask for any financial consideration for such deletion of scope of the work.
41. The contractor shall take photographs of site prior to commencement of work, during construction and after completion of work as suggested and shall submit the photographs in soft and hard copies to IIM for which no extra payment will be made.
42. If required and directed by Engineer-In-Charge, contractor shall arrange visits of his personnel comprising of Engineer-In-Charges to various places/ plants in or out side Indore to check and verify the quality of material at manufacturer's places. No extra cost shall be given for this to contractor.
43. Proforma of Registers to be as per standard CPWD formats.
44. Any debris/ dismantled unserviceable material generated at site should be disposed by the contractor as per the direction of Engineer-in-Charge or in the area marked by Indore Municipal Corporation (IMC) (Presently it is Devguradia which approx. 25 km away from the institute) at his risk & cost. No payment shall be made towards the transportation & statutory fees, if any of IMC.
45. Contractor has to maintain the cleanliness at the site to the level instructed by the Engineer-in-Charge. Negligence in this essence shall attract penal provision as decided by Engineer-in-Charge.
46. Stamp Duty:

- a. Stamp (wherever mentioned in the tender/ not mentioned but required legally), stamp duty will generally be following the Indian Stamp Act, 1899 (as applicable to Madhya Pradesh).
- b. For the contract, the stamp duty shall be as per the Indian Stamp Act, 1899 (as applicable to Madhya Pradesh). Any revision, if made by the govt. will be applicable at the time of execution of the agreements.
- c. The cost w.r.t. stamp duty will solely be with the bidder i.e. cost to be borne by successful bidder.

47. In case of any addition / deletion of the scope occurs during the execution, the modality devised with mutual consent shall be followed. The financial implications in this regard shall be governed by the respective DSR item of latest CPWD DSR and in case of Non-DSR items, it will be as per the market rate analysis.

O. Formats for Different Forms/Certificates

Annexure-1

Letter of Transmittal

To,
The Chief Officer Engineering,
IIM Indore (M.P.)
Sub: Submission of bid for the work of “**Renovation & Refurbishing of Director’s Secretariat at IIM Indore**” Vide NIT No. IIMI/Project/02/2025/167 File No. 513.

Sir,

Having examined the details given in Notice and bid document for the above work, I/we hereby submit relevant document.

1. I/we hereby certify that all the statement made and information supplied in respect of the aforesaid bid and accompanying statements are true and correct.
2. I/we furnished all information and details necessary for eligibility and have no further pertinent information to supply.
3. I/we submit the requisite EMD declaration/ requisite certified solvency certificate and authorize the Institute i.e. IIM Indore or its officials to approach the bank issuing the same to confirm the correctness thereof. I/We also authorize IIM Indore and its officials to approach individuals, employees firms and corporation to verify our competence and general reputation.
4. I/We submit the certificates/ documents in support of our suitability, technical knowledge and capability for having successfully completed the said works (as mentioned / as attached in support of eligibility requirement)

Seal of bidder

Date of submission:

Signature(s) of Bidder(s)

Format of Bank Guarantee
Bank Guarantee for Performance Security

(On letter head of the Owner with adhesive stamp / non-judicial stamp paper of appropriate value at the time of issue of Bank Guarantee)

THIS DEED OF GUARANTEE made on _____ day of ____ 2025, between [Name of Bank], having Registered Office at [Address], (hereinafter called the “Bank” which expression shall unless repugnant to the context and meaning thereof include its successors) in favor of **Indian Institute of Management Indore having its office at Prabandh Shikhar, Rau-Pithampur Road, Indore- 453556 (M.P.)** (hereinafter called “Owner” which expression shall unless repugnant to the context and meaning thereof include its successors and assigns).

WHEREAS (IIMI) Indian Institute of Management Indore has issued a Letter of Acceptance / Letter of Intent No..... dated _____ to _____ having its Corporate office at _____ (hereinafter called the “Contractor”) which constitute a binding Contract (hereinafter called “Contract Agreement”) for carrying out the “**Renovation & Refurbishing of Director’s Secretariat at IIM Indore**” based upon the Tender submitted by the Contractor and agreed between Client and Contractor and subject to the terms therein contained. The work to be carried out by Contractor shall be supervised and implemented by M/s _____ (hereinafter called “Contractor/Bidder”)

AND WHEREAS in accordance with the terms and conditions of the contract agreement, the Contractor has agreed to furnish a Bank Guarantee to Owner in the form of acceptable to performance guarantee for a sum of Rs. _____ (Rupees _____ Only) to ensure timely and satisfactory performance by the Contractor of its obligation under the Contract Agreement.

AND WHEREAS the Bank has at the request of the Contractor agreed to furnish this irrevocable and unconditional guarantee in favour of Owner to secure performance by the Contractor of its obligations under the Contract Agreement on the terms and conditions herein contained.

NOW THIS DEED WITNESSETH AS FOLLOWS:

1. The Bank hereby unconditionally and irrevocably guarantees the due and punctual performance and observance of and compliance by the Contractor of the covenants, agreements, conditions and provisions expressed or implied on the part of the Contractor to be performed observed or complied with under the Contract Agreement in accordance with the terms thereof and in the event of any non-performance and non-compliance of the same for any reason, the Bank shall absolutely irrevocably and unconditionally without any demur right of set off or counter claim, forthwith upon written demand by Owner and without demur or protest and without reference to the Contractor pay to Owner a sum not exceeding Rs. _____ (Rupees _____ only). A demand so made by _____ shall be final and binding on the Bank.

2. The Bank's liability under this Guarantee is restricted to Rs. _____ (Rupees _____ only).
3. The decision of Owner for the time being in force, or at any time thereafter as to the non-performance, non-observance and non-compliance by the Contractor of the covenants, agreements, conditions and provisions, expressed or implied, on the part of the Contractor, to be observed performed or complied with under the Contract Agreement shall be final, conclusive and binding upon the Bank and shall not in any circumstances be questioned by the Bank, under what so ever circumstances.
4. Any demand for payment under this Guarantee shall be made on the Bank by Owner in writing at [Bank Address] and shall be deemed to have been sufficiently made by Owner if the writing containing the demand is sent to the Bank by registered post to the address as aforesaid or sent to the Bank by hand delivery at such address and written acknowledgement obtained to such delivery.
5. The guarantee obligations of the Bank hereunder shall continue in force and effect and be binding on the Bank in accordance with its terms upto _____ or unless extended on written demand by IIM Indore until the due performance, observance and compliance by the Contractor of all the covenants, agreements, conditions and provisions, expressed or implied, on the part of the Contractor to be observed, performed or complied with under the Contract Agreement, the completion of the Defects Liability Period and issue of the Certificate of Final Completion by Owner in accordance with the Contract Agreement.
6. As between the Bank and Owner (but without affecting the Contractors' obligations) the Bank shall be liable under this Guarantee as if it were the sole principal debtor. The Bank's liability hereunder shall not be discharged nor shall its liability be affected by:
 - a. Any time, indulgence, waiver or consent at any time given by Owner to the Contractor.
 - b. Any amendment to the Contract Agreement,
 - c. The making or the absence of any demand by Owner on the Contractor or any other person for payment.
 - d. The enforcement or absence of enforcement of the Contract Agreement or of any security or other defect in any provision of the Contract Agreement or of any of the Contractors obligations there under;
 - e. The dissolution, amalgamation, reconstruction or reorganization or appointment of any Administrative Receiver of the Contractor.
7. The Guarantee herein contained shall not be determined or in any way prejudiced or affected by any change in the constitution of the Bank/ Owner or by any merger, or amalgamation or reconstruction of the Bank / Owner but shall be enforceable against the merged, amalgamated or reconstruction body.
8. The Bank hereby expressly and irrevocably waives all claims of waiver, release, surrender or compromise and all defenses, set offs, counter claims recoupments, reductions, limitations and impairments, whatsoever.
9. Owner shall be at liberty to vary and alter or modify any of the terms and conditions of the Contract Agreement including without limitation to extend from time to time the time for the performance of the Contract Agreement by the Contractor or to postpone from time to time any of the powers exercisable by owner against the Contractor, to forbear or to enforce any of the terms and

conditions of the Contract Agreement, without in any manner affecting this Guarantee and without notice to or assent of the Bank.

10. The Bank waives any right to require/ proceeding first against the Contractor or the realization first of any other security or other guarantee, if any.
11. The Bank agrees and confirms that its obligation to make payment to Owner on demand hereunder and discharge of such obligation shall not be delayed, exercised or avoided by reason of any act or omission on the part of Owner.
12. The bank declares and confirms that the Bank has taken all necessary corporate action to authorize the execution delivery and performance of this Guarantee in accordance with the terms hereof and that the Bank has full power to enter into and perform and discharge its obligations under taken hereunder and that this Guarantee constitutes legal, valid and binding obligation of the Bank, enforceable in accordance with its terms and any defects therein or in its execution shall not be a plea for non-payment or performance of its obligation.
13. This guarantee shall be Governed by and construed in all respects according to the laws of India and shall be subject to the jurisdiction of the courts in Indore.
14. Any forbearance or indulgence on the part of Owner in the enforcement of the covenants, agreements, conditions and provisions, expressed or implied, on the part of the Contractor to be observed, performed or complied with by the Contractor under the contract agreement shall in no way relieve the Bank of its liability under the Guarantee.
15. Terms and expression defined in the contract agreement and used herein shall have the meanings assigned to them therein save and except where the context otherwise require.
16. Notwithstanding anything contained hereinabove;
 - a. Our liability under this bank guarantee shall not exceed Rs. _____ (Rupee _____)
 - b. This bank guarantee shall be valid upto _____ or and
 - c. It is a condition to our liability for payment of the guaranteed amount or part any thereof arising under this Bank guarantee that we receive a valid written claim or demand for payment under this bank guarantee on or before _____ or as provided in clause 5 failing which our liability under this bank guarantee will automatically cease.
 - d. This bank guarantee is not assignable and not transferable to third party.

IN WITNESS WHEREOF THE BANK HAS SET ITS HAND AND SEAL THE DAY AND YEAR FIRST ABOVE WRITTEN.

SIGNED for and behalf)
Of the Bank by it's duly authorized)
Representative)
In the presence of)

Annexure-3

Local Content certification

We M/s _____(bidder's name) under that we meet the mandatory Local Content (LC) requirement for qualifying as 'Class I Local supplier's as per the PP-LC Policy against Tender No. _____dated _____. The percentage of Local Content in the Bid is _____%*

Authorized dated signature of the bidder with stamp.

Scope of Work

This tender is hereby issued as a **Design & Build Contract**, wherein the selected bidder shall be responsible for the complete execution of the project, including design, supply, installation, testing, commissioning, and handing over of the works in all respects as per the terms and conditions of the contract.

The **scope of work, technical specifications, and indicative quantities** provided in this document are for **reference purposes only** and are intended to give bidders a general idea of the requirements. These details **should not be construed as exhaustive or final**, and bidders must carry out their own due diligence to assess the actual site conditions, requirements, and quantum of work before submitting their bids.

Bidders are **strongly advised** to visit the site well in advance to familiarize themselves with the **site constraints, existing infrastructure, scope of work, and execution feasibility**. Any claims regarding deviations from the indicative quantities, site conditions, or unforeseen elements shall not be entertained at a later stage. The bidder shall be solely responsible for verifying all site-specific requirements before quoting.

The contractor shall be required to execute the work in compliance with the latest applicable standards, statutory requirements, and best engineering practices, ensuring seamless integration of all components for the successful completion and handover of the project.

The selected contractor shall be responsible for the design, creation, and execution/construction of the following areas:

- Reception Area
- Waiting Lounge
- Director's Secretariat
- Visitors' Lounge
- Board Room
- Male & Female Toilets
- Pantry
- Store Room

The scope includes **conceptualization, detailed designing, material selection, and execution of civil, interior, electrical, plumbing, HVAC, and associated works** necessary to achieve a fully functional and aesthetically coherent space. The contractor shall develop the design in accordance with the functional and aesthetic requirements specified by the client and seek approval before proceeding with execution.

1. Specifications & Indicative Quantities:

- The quantities provided in the tender documents are indicative and for reference only.
- The bidders are responsible for verifying and assessing the actual requirements based on site conditions.

- The contractor shall submit detailed design proposals, including drawings, material specifications, and work methodology, for approval prior to execution.

2. Site Visit & Familiarization:

- Bidders are advised to visit the site before submitting their bids.
- The site visit will enable them to assess the existing conditions, access constraints, and any other relevant factors that may impact the scope of work.
- No claims regarding site conditions shall be entertained later.

3. Execution & Compliance:

- The contractor shall ensure that the construction adheres to approved designs, specifications, industry standards, and best practices.
- All works shall be executed with high-quality workmanship and in compliance with relevant building codes, safety regulations, and environmental norms.

4. Existing Items / equipment / fittings / fixtures etc

- The existing HVAC / Display unit / Panels / Cameras/ AV system in the board room shall be retained.
- The contractor shall be responsible for dismantling the existing system as required and subsequently reinstalling and making it operational to the satisfaction of the Engineer-in-Charge.
- The cost for dismantling, reinstallation, and re-commissioning of the existing system shall be included in the contractor's quoted rate.
- Any existing Items / equipment / fittings / fixtures etc obtained from other locations shall be safely dismantled and to be handed over to the respective department of the IIM Indore.
- No extra payment for the aforesaid job/activity shall be admissible.

All bidders shall consider the above points while quoting their rates and submitting their proposals.

Technical Specifications / details / requirements

The specifications for all items shall be governed by the respective provisions of the latest **CPWD Specifications**, where applicable. In cases where an exact match is not available, the specifications of the most **similar item** in the CPWD guidelines shall be followed.

For **DSR (Delhi Schedule of Rates)** items, the execution shall adhere strictly to the CPWD specifications. For **Non-DSR items**, the work shall be carried out as per the **item description**, supplemented by the directions of the **Engineer-in-Charge** to ensure quality and compliance with project requirements.

The **Institute reserves the right** to specify and approve the makes of materials and products to ensure the **best quality standards** in the interest of the project and the

institution. All materials and workmanship shall conform to the relevant **Indian Standards (IS), best industry practices, and statutory requirements** as applicable.

Broad item details / specifications / requirements are as follows:

Civil / Interior Works:

Item Description	Units	Quantity
DISMANTLING & DEMOLISHING WORK: As per the requirement of the site and as directed by Engineer-in-Charge	-	-
stone/ Tile slab flooring	-	-
brick work	-	-
false ceiling	-	-
old plaster or skirting	-	-
doors, windows and clerestory windows	-	-
Disposal of building rubbish / malba / similar unserviceable, dismantled or waste materials by mechanical means, including loading, transporting, unloading to approved municipal dumping ground or as approved by Engineer-in-charge	-	-
flushing cistern, W.C. Pan, Sanitary, Plumbing etc of all types	-	-
REPAIRING WORK	-	-
With 12 mm cement plaster of mix-1:4	-	-
CIVIL CONSTRUCTION WORK	-	-
water proofing treatment in portion of Toilet etc., by applying cement slurry mixed with water proofing cement compound consisting of applying: a) First layer of slurry of cement @ 0.488 kg/Sqm mixed with water proofing cement compound @ 0.253 kg/Sqm. This layer will be allowed to air cure for 4 hours. b) Second layer of slurry of cement @ 0.242 kg/Sqm mixed with water proofing cement compound @ 0.126 kg/Sqm. This layer will be allowed to air cure for 4 hours followed with water curing for 48 hours. This includes preparation of surface, treatment and sealing of all joints, corners, junctions of pipes and masonry with polymer mixed slurry.	-	-
Protective Screed for waterproofing: Concrete of M15 grade with minimum cement content Of 240 kg/cum. Average depth 50mm	-	-
Brick Work: Full /Half Brick work with common burnt clay F.P.S (non-modular) bricks of class designation 7.5 in superstructure above plinth level up to floor V level in all shape and size in: Cement Mortar 1:4 includes MS Bar for half brick work	-	-
Tile & Stonework	-	-
Carpet: Yarn: Nylon 6, Size (Cm) : 25 X 100, Pile Height: 3.5-4.0 Total Thickness 5.5-6 Density 5200-5500 Tufting Weight (Oz) 18 SPI 11 Backing System Welspun Ecolite or Comfortile	-	-
High end Granite stone of 18 mm or as required skirting 4" high: Fixing Granite Skirting with adhesive	-	-
High end Vitrified flooring / dado of required shade and size	-	-
Providing and fixing in position double levelled Pantry counter	-	-
double levelled wash basin counter: The counter shall be supported on framework made of M.S Angle painted with red oxide primer. The counter shall be made of 19 mm thick fire retardent ply and the counter top to be finished with 20 mm thick Hafele quartz Nebula white.The facia and the ledge will be finished in 1mm th. laminate over plywood as per detail, including making cabinet 300mm, moulding, chamfering and mirror polish	-	-

Item Description	Units	Quantity
of counter and edges, cutting hole for basin & tap, cleaning, washing and grouting with white cement mix with coloured pigment to match stone shade, etc all complete at all level/ heights, lifts and leads to the entire satisfaction of the Architect . All joints to be "v" Grooves		
Window sills & Ledge Wall Sill: 18 mm thick composite Granite finished with machine cut , window sills and similar locations, of required size, approved shade, colour laid over 20 mm thick base cement mortar 1:4 (1 cement : 4 coarse sand), joints treated with white cement, mixed with matching pigment, epoxy touch ups, including rubbing, curing, moulding and polishing to edges to give high gloss finish etc. complete at all levels.Euro make or equivalent.	-	-
Wooden Frame Work	-	-
Wooden Frame work: wooden framework which includes 50x50mm seasoned Salwood placed at 610mm centre to centre vertically as well as horizontally and joined by necessary nails. The salwood to be properly seasoned. It should be treated with one coat of anti-termite treatment of approved make as per manufacturer's specifications. The wooden framework to be continued right up to the True ceiling. 12mm / 6mm as required, fire retardant plywood to be used over framework including Glass wool Insulation	-	-
Acoustic Panel	-	-
Acoustic Wooden Panels: Acoustic paneling made up of 12mm THK CNC cut grooved acoustic of approved make & shade as per site requirement. The acoustic panels shall be fixed on to the 12mm FR+ ply with necessary adhesive or 3M double sided tape as per manufacturer recommendation, including Ply backing, CNC groove cut and all incidentals as required to complete the job.	-	-
Laminate Panelling: laminate panelling, formed of 12mm thick ply backing onto the existing partition as second layer by means of approved wooden screws/nails and to be finished with 1mm approved laminate as per details. To have necessary grooves as per details. To be in proper line and level as per site requirement necessary salwood supports & grooves aluminium u channels as per details.	-	-
FALSE CEILING	-	-
Al Ceiling Lay in perforated Tegular edge global white color tiles of size 595x595 mm and 0.5 mm thick with 8 mm drop; made of GI sheet having galvanizing of 100 gms/sqm (both sides inclusive) and 20% perforation area with 1.8 mm dia holes and having NRC (Noise Reduction Coefficient) of 0.5, electro statically polyester powder coated of thickness 60 microns (minimum), including factory painted after bending and perforation, and backed with a black Glass fiber acoustical fleece.(Torsion Spring metal ceiling system allows both flat and curved ceiling panels to swing down from the ceiling plane.)(Hunter Douglas)	-	-

Item Description	Units	Quantity
Gypsum ceiling :False ceiling at all height including providing and fixing of frame work made of special sections, power pressed from M.S. sheets and galvanized with zinc coating of 120 gms/sqm (both side inclusive) as per IS : 277 and consisting of angle cleats of size 25 mm wide x 1.6 mm thick with flanges of 27 mm and 37mm, at 1200 mm centre to centre, one flange fixed to the ceiling with dash fastener 12.5 mm dia x 50mm long with 6mm dia bolts, other flange of cleat fixed to the angle hangers of 25x10x0.50 mm of required length with nuts & bolts of required size and other end of angle hanger fixed with intermediate G.I. channels 45x15x0.9 mm running at the spacing of 1200 mm centre to centre, to which the ceiling section 0.5 mm thick bottom wedge of 80 mm with tapered flanges of 26 mm each having lips of 10.5 mm.Fully Perforated Gypsum Plaster Board of size 1200 x 2400x12.5 mm having approx. 15 % perforated area with perforation size and pattern as approved by the Engineerin- charge and as per manufacturer's specification, with all 4 side tapered and backed by acoustical tissue with NRC value not less than 0.60 .	-	-
Baffle ceiling consisting of 'Box' shaped 1.4mm thick aluminium extruded section , The size of the 'Box' sections shall be 50x100mm with baffle to baffle 125mm and centre to centre 175mm (which can be modified as per architect/designers requirement). available in length of 3900mm.which can be modified as per the architect design .The baffles shall be fixed to each other using framework of size 25mmx15mm made using 0.8mm thick Aluminium sheet which is folded and bent to desired profile finished with powder coating. These mild steel framework/sections shall be inserted between two members and fixed using self interlocking system. The mild steel framework in turn are fixed on to he true ceiling above using a suitable suspension system consisting of nuts, Washers, 6mm GI rod and anchor fasteners. This ceiling facilitates easy maintenance. This include includes necessary supports as per manufacturer specification. The ceiling and the accessories are provided with powder coated thickness of 70-80 microns. Powder coating colour: Any colour	-	-
PAINTING	-	-
Priming coats with primer of approved brand and manufacture,having low VOC (Volatile Organic Compound) content With water thinnable cement primer on wall surface having VOC content less than 50 grams/litre	-	-
Wall painting with premium acrylic emulsion paint of interior grade, having VOC (Volatile Organic Compound) content less than 50 grams/ litre of approved brand and manufacture, including applying additional coats wherever required to achieve even shade and colour -Two coats	-	-
white cement based putty of average thickness 1mm, of approved brand and manufacturer, over the plastered wall surface to prepare the surface even and smooth complete	-	-
WINDOWS	-	-
Aluminium work for doors, windows, ventilators and partitions with extruded built up standard tubular sections/ appropriate Z sections and other sections of approved make conforming to IS: 733 and IS: 1285, fixing with dash fasteners of required dia and size, including necessary filling up the gaps at junctions, i.e. at top, bottom and sides with required EPDM rubber/ neoprene gasket etc. Aluminium sections shall be smooth, rust free, straight, mitred and jointed mechanically wherever required including cleat angle, Aluminium snap beading for glazing / paneling, C.P. brass / stainless steel screws, all complete as per site requirement and the	-	-

Item Description	Units	Quantity
directions of Engineer-in-charge. : For fixed portion- Powder coating to be done.		
<p>Fixed Glass: Slim Glass partition of 12mm Toughened Glass using DORMA Alexa System-45 Frames to a height of maximum 3m or as per drawing. The Fixed glass to be fixed using DORMA Alexa BP45 Profiles at Top & Bottom & Alexa SP45 at sides. The profile size to be 45 x 25 x 2mm to be fixed on to the floor/wall/ ceiling as per the architect design DORMA Alexa H Junction profile to be used at all Glass to Glass vertical joints, 90 Deg L Junction Profiles and T Junction profiles necessary as per design. In case of Glass overall panel Alexa MP45 & BP45 Overpanel Profile to be used. In case of Open glass edges EP45 End Profile to be used. The Alexa profiles shall be suitable for Glass thickness of 10/12.The Profile shall be matt natural anodized, the Profile Manufacturer to supply all the necessary clips, seals and fixing accessories for the system. All Profiles to be with 2 mm Gauge thickness Excluding 20 Micron of Anodizing. Approved Manufacturer: Profiles/Frames: DORMA, Glass : Saint Giobain/Ashai</p>	-	-
DOORS	-	-
<p>Main door glass shutter: Glass Door of 12mm toughened glass with DORMA Alexa System-45 frames all around the door. Alexa EP End Profile frame of size 45X50mm with seals with DORMA PT Std Patch Fitting with Top & Bottom patch, BTS 75V Floor Spring with Hold open (as per EN 1154) and necessary seals to be provided all around the door frames. In case of Glass over panel Alexa OHP-EP45 Over Panel End profile to be used. The Alexa profiles shall be suitable for Glass thickness of 10/12/13.52mm.The Profile shall be matt natural anodized, the Profile Manufacturer to supply all the necessary clips, seals and fixing accessories for the system. All Profiles to be with 2 mm Gauge thickness Excluding 20 Micron of Anodizing.Approved Manufacturer: Profiles/Frames: DORMA, Glass : Saint Giobain/Asahi</p>	-	-
Switchable Magic Glass Smart Film by using switchable PDLC film for the Glass Partition and Glass doors as per manufacturer specification and as per the site requirement and as directed by Engineer-in-Charge. Including remote control setup & all other accessories.	-	-

Item Description	Units	Quantity
<p>Automatic sliding door as per following specifications Providing and fixing of tested fully glazed steel fire rated double leaf door with 120 minutes of integrity and radiation control (EW 120) fabricated with 1.6 mm thick galvanized steel sheet. The door frames are manufactured from 1.6 mm galvanized steel sheet pressed to form a profile of 35 mm x 60 mm on the vertical sides and 50 x 60 mm on the horizontal side. The door shutter would have a top rail and side rail 60 mm x 60 mm and a bottom rail of 110 mm x 60 mm. The sections have a special insulating infill. The overall door opening is 2440 mm x 2440 mm. The test is conducted in IFTS as per EN 1634-1: 1999. The glass should be Contraflam Door Lite, 11mm clear 120 min fire rated (EW 120) Non Wired Toughened Interlayered glass with a light transmission of 86% and a sound reduction of 37 dB and manufactured in UL & TUV audited Facility and including UL-EU Certification. The glass should be compliant to class 2(B)2 category of Impact Resistance as per EN 12600. The glass should be held in its place with the help of 1.6 mm GI beading and a special ceramic tape with cross section of 5 x 20 mm as per the test evidence. The maximum glazing size should be not more than 1100 mm x 2200 mm (w x h) or 2.42 sq mt in total area which should be clearly mentioned in the test certificate.</p> <p>The shutters should be fixed to the frame using Dorma SS Ball Bearing Hinges of size 100 mm x 89 mm and 3 mm thickness or equivalent. Beading should be attached using 4 mm x 35 mm SS screws at a distance of 75 mm from the edges and 150 mm c/c henceforth. The door should be fitted with Dorma Mortise Sash lock 952F and door closer TS 83V of Dorma make or equivalent. The inactive leaf should be fixed to the frame using 1200mm long Dorma tower bolt no 9114306 or equivalent.</p> <p>AUTOMATIC DOUBLE SLIDING OPERATORS, SYSTEM with the following accessories.</p> <ul style="list-style-type: none"> · Aluminium operator profile with cover 4150 mm length · Main carrier head with rollers · Pulley set with toothed belt · Electric motor with decoder · Guide Rail · Base control device with Integral switching · External programme switch Key with cable · Eagle 6 safe Sensor · Glass clamping rails · Electro mechanical hook lock · Floor guide · Soft Nose seal <p>Wall Connecting Profile Aluminium U Channel Silicon Sealant 10 mm toughened glass for Sliding Panel 12mm thick toughened glass</p>	-	-
SS H handle with SS screws etc. complete as per direction of Engineer-in-charge. Make Dorma	-	-
<p>Door Frame: wood work in frames of doors , windows clerestory windows and other frames , wrought framed and fixed in position with hold fast lugs or with dash fasteners of required dia and length .Second Class Teak Wood</p>	-	-
<p>Door Shutter : ISI marked flush door shutters conforming to IS:2202 (Part I) decorative type, core of blockboard construction with frame of 1st class hard wood and well matched teak 3 ply veneer with vertical grains or cross bands and face veneers on both face of shutters. 30 mm thick including ISI marked stainless Steel butt hinges with necessary screws.</p>	-	-

Item Description	Units	Quantity
bright finished brass tower tower bolt black finish,(Barrel type) with necessary screws etc. complete : 200 X 10 Mm	-	-
Providing and fixing H Handle	-	-
bright brass hanging type floor door stopper with necessary screws etc complete.	-	-
Special quality bright finished brass latch & door Closure of approved quality including necessary screws etc complete	-	-
Column Cladding as detail in drawing	-	-
GI frame with minimum 6mm flexible fire retardant plywood. Finish with texture paint.	-	-
FURNITURE WORK	-	-
Storage Cabinet: low height storage of width upto 650mm and size as per drawings, with top, sides and bottom in 19mm thick marine fire retardant ply, back in 8mm thick marine ply, intermediates in 19mm thick marine ply, shutter in 19mm thick marine ply and finished with 4mm thick veneer with edges in matching wood beading finished in matching melamine polish. All external surfaces to be finished in approved 4mm thick veneer and finished in melamine polish. All internal surfaces to be pre-laminated with PVC edge binding, including hardware such as approved locks, auto closing hinges for shutters, approved handles, door stop, tower bolt, etc. complete.	Unit	1
Full height storage as per details made of 19mm Fire Retardant Ply finished with laminate. To have necessary FRP Ply backing as per details. Storage to have necessary shelves formed of 19mm FRP Ply finished with laminate. Shutters made up of BWP Ply finish with laminate. Shutters to be provided with necessary hardware's like hinges, tower bolts, SS handles, magnetic catchers and locks etc., of approved make and quality. Shutters to be post formed. All the exposed surfaces to be finished with laminate of approved shade and inside surfaces to be finished with 0.8mm laminate, including Borer / Antitermite treatment for salwood and Fire Retardant Plywood, including Aluminium ladder	Unit	1
Library Rack: book-rack in Library, made out of 19mm thk FR + plywood finished with 1mm thk approved laminate from out side & inside. At the bottom it will be 900mm, rack will have shelves on both the side of the rack back ply to be fix in slope, all the rack will have the shelves of 250mm depth of 200mm & shelves to be fix at the 300mm height, length of the shelves will be 1800 mm approx , over all size will be 1800mm length & depth are varying from 300 to 600 mm,	Unit	1
Full height storage as per details made of 19mm Fire Retardant Ply finished with laminate. To have necessary FRP Ply backing as per details. Storage to have necessary shelves formed of 19mm FRP Ply finished with laminate. Shutters made up of BWP Ply finish with laminate. Shutters to be provided with necessary hardware's like hinges, tower bolts, SS handles, magnetic catchers and locks etc., of approved make and quality. Shutters to be post formed. All the exposed surfaces to be finished with laminate of approved shade and inside surfaces to be finished with 0.8mm laminate. Cost should include Borer / Anti termite treatment for salwood and Fire Retardant Plywood. This also includes Aluminium ladder	Unit	1

Item Description	Units	Quantity
Over head storage as per details made of 19mm thick fire retardant Ply finished with laminate. To have necessary 6mm thick fire retardant Ply backing as per details. Storage to have necessary shelves formed of 19mm thick fire retardant Ply finished with 0.8mm thick laminate. Shutters to be post formed and to be provided with necessary hardware's like spring loaded hinges, tower bolts, SS handles, magnetic catchers and locks etc., of approved make and quality. The unit to be hung on to walls / partitions. All the exposed surfaces to be finished with 1mm thk laminate and inside surfaces to be finished with 0.8mm laminate including anti termite treatment / borer treatment for salwood / fire retardant Plywood.	Unit	1
18 mm FR+ & flexi plywood of 8mm thick. Cushion of 75mm thick. Fabric finish with laminate at bottom	Unit	1
Furniture		
Reception Chairs Low Back. Make: Featherlite	No	1.00
Reception Table: Reception table of required size with Tabletop formed of approved 12mm thick Corian with edges as per details. To have transaction counter made of 19mm thick fire retardant Ply boxing finished with approved 12mm thick Corian; shade as per details. To have vertical supports formed of 19mm thick Ply boxing finished with approved 4mm thick veneer and fluted panels as per details. Inside surface of the boxing to be finished with laminate. To have facia made of 19mm thick Ply boxing to accommodate the raceways. This includes 2 pedestal units finished with Veneer and complete Melamine finish. Providing drawer pedestals with two drawers of 150mm ht and one drawer of 325 ht as per details. Drawers made of 19mm thick fire-retardant Ply finished with 0.8mm laminate inside. This includes 50mm high skirting as per details. SS strip of 12mm thk to be consider at the table facia & keyboards to be provided.' This includes necessary hardware like castors, brass hinges, ball catches, fully extendable drawer slides, locks, handles etc., of approved make, the table to have provision for the electrical & networking cables entry and boxing required including cutouts required to mount the electrical & networking plates. Minimum Basic Rate as follows: Veneer - Rs. 1800 per Sqmt Corian - Rs. 10000 per Sqmt	No.	1.00
Chair: Mid Back Make: Featherlite (model- Crome YS-6050MB (or equivalent and as per the direction of the Engineer-in Charge.	No.	16.00
Timberland Coffee Table (106.9x61.46x45.72) (Godrej Make brought out item) or equivalent and as per the direction of the Engineer-in Charge.	No.	2.00
Board Room Chairs- office chair (high back) knee-tilt multilock mechanism of featherlite make (model - Crome-YS-6040C) or equivalent and as per the direction of the Engineer-in-Charge.	No	2.00
Board Room Chairs: office chair (Medium back) knee-tilt multilock mechanism of featherlite make (model- Crome YS-6050MB) or equivalent and as per the direction of the Engineer-in Charge.	No	25.00
Board Table: Board table as mentioned in the shop drawing with 12mm thk Corean top. All the plywood should be fire retardant. Corian thickness 12mm.	No	1.00
Customized Sofa behind Seating area (Length 7.5 Meter) as per the direction of the Engineer-in Charge.	No.	1.00

Item Description	Units	Quantity
Premium Sofa- Make: Featherlite or equivalent as decided by Engineer-in-Charge (2 seater)	No.	2.00
Premium Sofa- Make: Featherlite or equivalent as decided by Engineer-in-Charge (Single seater)	No.	6.00
Premium Cushion Chair - Featherlite or equivalent as decided by Engineer-in-Charge	No.	2.00
Timberland Coffee Table (106.9x61.46x45.72) (Godrej Make brought out item) or equivalent as decided by Engineer-in-Charge	No.	1.00
Table with ERU Top Finish with 12mm Corian with toughened glass top as directed by Engineer-in-Charge	No	3.00
Window blinds: roller blinds with Pleated/perforated screen fabric of approved colour shade with approximate 38mm OD. Top tube having an inbuilt spring clutch system and an idler made of fibre glass reinforced polyester for a smooth operation through a centrally rotating shaft. The clutch assembly shall be move bi-directionally by means of a nickel coated brass chain with bead pitch of 6mm. The roller binds fabric shall be composed of polyester/PVC/Fiberglass with specified openness factor and weight and shall have a strong cut-off of UV radiations yet keeping a high level of colour light fastness. The fabric shall have M1 and NFPA-701 fire classifications and comply with green building/LEED credits insuring a safe and healthy indoor air quality for the inhibitors. The roller tube with the inner ribs, clutch spring assembly, fibreglass reinforced idler, insert type brackets, brass beaded chain bottom bar, fabrics, as specified and approved, etc. al complete as per approved manufacturer specification and as directed by the Engineer-in-Charge (Make Hunter Douglas)(With cover box of rod) or equivalent as decided by Engineer-in-Charge	Sqm	20.30
planter box made out of 19mm thick fire retardant ply, finished with Corean. Grooves to be created in the laminate, as shown in the drawing, including pebbles for the same, complete as approved and as per the instructions by the Engineer-in-Charge.(1" & 2" pebble size and Per sqmt 1300 no). 600mm Depth		
Approved quality imported marble (Minimum Basic rate- 500/- per Sqft) flooring in pattern, design, and size as detailed in drawing or as directed by the Engineer-in-Charge. Imported Marble to be bedded in cement sand mortar mix ratio 1:4 (1 cement : 4 sand) including cleaning and preparing the surface for bedding, spreading neat cement slurry by using minimum cement about 2 kg/sqm prior to bedding and spreading cement paste using minimum cement about 4.5 kg/sqm over bedding, joints to be well cleaned and grouted with cement based grout mix with colour pigment to match with Marble, moulding, chamfering, mirror polishing of edges in case of protruding edges and making groove if required in required line level, including curing, cleaning, protecting work (By bubble sheet with 5mm) as approved manner till handing over etc. all complete at all level/ heights, lifts and leads to the entire satisfaction of the Engineer-in-Charge Location: Reception & lobby area as directed by the Engineer-in-Charge Note: Engineer-in-Charge may opt for high end tiling in place of aforesaid option for these areas in the interest of the work/ keeping harmony of the spatial provisions.		
Signages as per the site requirement and as directed by Engineer-in-Charge		
Nilkamal or equivalent dustbin 12 litre (SS material)		
Miscellaneous Items as required for completion of the work as per the intent.		

Electrical Works:

Particulars	Unit	Qty
POINT WIRING WITH FRLSH COPPER CONDUCTOR		
Wiring in medium class PVC conduit		
Wiring for light point/ fan point/ exhaust fan point/ call bell point with 1.5 sq.mm FRLSH PVC insulated copper conductor single core cable in surface / recessed medium class PVC conduit, with modular switch, modular plate, suitable GI box and earthing the point with 1.5 sq.mm FRLS PVC insulated copper conductor single core cable etc. as required. Group C	-	-
Wiring for circuit/ submain wiring alongwith earth wire with the required sizes (as directed by Engineer-in-Charge) of FRLSH PVC insulated copper conductor, single core cable in surface/ recessed medium class PVC conduit as required.	-	-
Supplying and drawing 2 pair telephone cable in the PVC conduit as required.	-	-
IP Telephone Instruments as per details:- Phone Features 2 Line (Support 2 SIP account), Support Call Waiting, Call Forward, Call Transfer, Call on Hold, Mute, Auto-answer, Redial, DND, Local 3-Way Conference, Support SMS, Support Call Deflect, Volume Adjustable, Ring tones Selectable, Speed Dial, Hotline Daylight Saving Time, Direct IP call, Auto Redial, Call Return Dial Plan, XML Browser, Hot Desking, Keypad Lock, Action URL/URI Phonebook (500 groups), Blacklist (100 groups), Call logs (100 entries), Voicemail, MWI Message Notification, Music on hold, Intercom, Call Pickup, Group Call Pickup, Anonymous Call, Anonymous Call Rejection, SIP V1(RFC2543), V2(RFC3261) 3 DTMF modes: In-Band, RFC2833, SIP INFO, HTTP/HTTPS Web Server for Management, NTP for Auto Time Setting, TP/FTP/HTTP/HTTPS Protocols, Support HTTPS (SSL), SRTP, TLS HD Voice, Codec: G711a, G711u, G.722, G.729, G.723, G.726 VAD, CNP, Echo Cancellor, Full-Duplex Speakerphone, LDAP Graphical LCD with Backlight, RJ9 Handset Jack and Headset Jack 2 RJ45 10/100M Ethernet Jacks, Wall Mount, PoE: IEEE 802.3af Auto provisioning using FTP/TFTP/HTTP/HTTPS/PnP Dial through IP PBX Using Phone Number Dial through IP PBX Using URL Address Configuration Managements with Web, Keypad on the phone, And Auto Provisioning, SNMP, TR069 Make : Siemens/Panasonic/Polycom/AVAYA/Coral/Audiocode	Each	8
Medium class PVC conduit along with accessories in surface/recess including painting in case of surface conduit, or cutting the wall and making good the same in case of recessed conduit as required 25 mm	-	-
Modular switch/ socket outlet complete including modular plate & switch box, switches, sockets including connections modular plate etc. as required.	-	-
Two module stepped type electronic fan regulator	-	-
Supplying and drawing of 4 pair CAT-6A Cable in the existing surface/ recessed Steel/ PVC conduit as required.	-	-
Wiring for group controlled (looped) light point/fan point/exhaust fan point/ call bell point with 1.5 sq. mm FRLSH PVC insulated copper conductor single core cable in surface/ recessed medium class PVC conduit, and earthing the point with 1.5 sq. mm FRLS PVC insulated copper conductor single core cable etc. as required : Group C	-	-
12 way (4 + 36), Double door: surface/ recess mounting, vertical type, 415 V, TPN MCB distribution board of sheet steel, dust protected, duly powder painted, inclusive of 200 A tinned copper bus bar, common neutral link, earth bar, din bar for mounting MCBs including MCBs and incomer as required.	-	-
Single pole 5 A to 32 A rating, 240/415 V, 10 kA, "C" curve, miniature circuit breaker suitable for inductive load of following poles in the MCB DB complete with connections, testing and commissioning etc. as required.	-	-

Particulars	Unit	Qty
63 A rating, four pole, 415 V, isolator in the MCB DB complete with connections, testing and commissioning etc. as required.	-	-
25 A rating, double pole, (single phase and neutral), 240 V, residual current circuit breaker (RCCB), having a sensitivity current 30 mA in the MCB DB complete with connections, testing and commissioning etc. as required.	-	-
25 A rating, four pole, (three phase and neutral), 415 volts, residual current circuit breaker (RCCB), having a sensitivity current 30 mA in the MCB DB complete with connections, testing and commissioning etc. as required.	-	-
LIGHTING CONTROLS	-	-
Passive Infrared(PIR) technology based occupancy sensor having high preformance, non regulating programmable type, suitable for connected load upto 10Amp , for mounting height up to 2.8 mtr and for 5 m diameter coverage area along with necessary fixing arrangements i/c programming at site etc. complete as required.	-	-
Luminaire / fitting complete as required:	-	-
LED panel luminiare 2' X 2', 36W, 4-6.5K	Each	32
LED Surface/Pendant mounted IP66 linear luminaire (Philips SP780 H LED25S-6500 PSU W5L112 OD) or equivalent	Each	12
12 Watt LED Rimless Surface Panel Light, Surface Mounted LED Down Light for Ceiling (Circular-Dia 300mm)	Each	4
Recessed LED Downlighter 9W - 15W as required	Each	52
Surface mount focus Spot Lights	Each	8
Metal LED 9 watts Indoor ceiling spot focus track light (1X5)	Each	1
LED Profile Lighting with driver (Approx quantity)	Mtr	50
Mirror Wall Light 11W (Philips-Photon or equivalent)	Each	2
Ceiling Suspended decorative ring light of size 600mm dia	Each	4
1200 mm sweep, BEE 5 star rated, ceiling fan with Brush Less Direct Current (BLDC) Motor, complete as required	Each	2
IGBT based UPS 20KVA suitable for 120minutes back up including necessary SMF type battery set . The UPS shall be 3 phase incoming & 3 phase output type & with Isolation transformer of suitable capacity. The UPS should be IP-30 design , Damp ,Vermin proof design with overload capacity of 125% for 15 minutes . UPS designed for 45 degree ambient Temparature. UPS Should be complete with all accessories , battery connection wire /cables , cable/wire lugs , fabricated stand to install UPS & battries. The UPS system & its accessories shall be as per tender & technical specification. Make Emerson / APC / HI REL (Equipment & computers)	Each	2
Double Door 5 Star Refrigerator with Base Drawer with Smart Inverter Compressor, Capacity 200-250 L, Body Material Steel, Shelf Material Toughened Glass with Frame, Power Requirement AC 220 - 240 V, 50 Hz with 1 Year Warranty on Product and 10 Years Warranty on Compressor Model LG-D211HBCZ or equivalent.	Each	1

Air-Conditioning works:

Description	Unit	Qty
OUTDOOR UNIT: Modular type Variable Refrigerant Flow/Variable Refrigerant Volume air cooled Outdoor units suitable for cooling and heating, having all hermetically sealed inverter type Scroll Compressor(s), minimum two compressors for above 14 HP modules, microprocessor based Controller, top discharge type condensing unit(s), with R 410 A Refrigerant, vibration isolators, with suitable foundation etc. complete as required. The unit shall deliver the rated capacity at AHRI Conditions and work even at 50°C ambient temperature without tripping. The unit shall be suitable to work on 400V +/- 10%, 3 Phase, 50Hz AC power supply. The unit shall be filled with first charge of the refrigerant and ready for use as required. The COP at AHRI conditions shall not be less than 3.28 and IEER not less than 6.5 and must deliver COP of minimum 4.7 at 50 % load including required refrigerant quantity and filling for respective system network	HP	20 HP
INDOOR UNIT-CASSETTE TYPE: Minimum capacity 4-way flow VRV/VRF Cassette Type Indoor ceiling mounted unit equipped with synthetic washable media pre-filter, fan section with low noise fan/dynamically balanced blower, multispeed motor, coil section with DX Copper coil, electronic expansion valve, outer cabinet, drain pump, grill, necessary supports, vibration isolation, cord less remote control etc., suitable for operation on single phase 230 V ± 10%, 50Hz AC supply, complete, as required. The unit shall have automatic force shut down provision in case of fire on receiving signal from BMS System. The indoor units shall be with inbuilt feature of motion sensor controles. The cooling capacity of indoor unit will be at air inlet conditions of 27 Degree C DB and 19 Degree C WB temperature.		
2 TR	Each	1
2.4 TR	Each	4
COPEER REFRIGERANT PIPING: Including vaccumiazation and Nitrogen testing of required nominal sizes of soft/hard drawn copper refrigerant piping for VRV/VRF system, complete with fittings, with suitable adjustable ring type hanger supports, jointing/brazing including accessories, insulated with XPLE Class-O tubular insulation/with Class-O closed cell elastometric nitrile rubber tubular sleeves sections of specified thickness as given below for Suction and Liquid lines, all accessories as per specifications etc. as required :	As required	
NOTE:- 1)The Copper Piping & Piping Circuit should be with Minimum Number of joints, which shall be attained by : (i) Using One End Expanded Tubes (ii) Bending the tubes instead of using elbow joints wherever 90 degree bending is required. (2) Piping should be routed at site in such a manner, that brazed joints in the refrigeration piping are kept to a minimum. (3) The makes of tube fittings shall be same as that of tubes. (4) The thickness of fittings used shall be same as that of the pipe.	-	-
Factory fabricated GSS sheet metal rectangular/round ducting complete with neoprene rubber gaskets, elbows, splitter dampers, vanes, hangers, supports etc. as required and specifications of Thickness 0.63 mm sheet complete as required.	-	-

Description	Unit	Qty
Powder coated extruded aluminium Supply Air Grills with aluminium volume control dampers as per specifications.	-	-
Powder coated extruded aluminium Return Air Grills with louvers but without volume control dampers complete as required.	-	-
supply air Round / Square diffusers of powder coated aluminium with aluminium volume control dampers with anti smudge ring & removable core.	-	-
Return air diffusers of powder coated aluminium without volume control dampers with anti smudge ring & removable core.	-	-
Inline Fan complete with casing (16 Gauge GI) Centrifugal fan, Fresh air Louvers (GI Construction), VCDs at Unit outlets etc. Fan motor shall be suitable for 1 Phase, 415 \pm 10% V, 50 Hz AC supply.	-	-
Air Quantity:100 CFM, Motor Rating: 100 Watt	-	-
Air Quantity:500 CFM, Motor Rating: 300 Watt	-	-
Air Quantity:200 CFM, Motor Rating: 150 Watt	-	-
"U" PVC Pipes unthreaded pipes as per ASTM D-1785 (PVC compound grade equivalent to PVC 1120/2120)) of Minimum 4 to 6 kg/sqcm, duly insulated with 9 mm Thick Nitrile rubber pipe section, complete with all necessary fittings such as elbows, tees, reducers, serviceable P traps. etc and supports such as clamps etc complete including jointing with rubbering / solvent / solution and airtight joints, cutting, making good the wall, ceiling and floor etc. complete of the required nominal bore (NB) size as required complete as per instructions of the engineer-in-charge.	-	-
UPVC S.W.R. Pipe with 4-6 Kg/Cm2 rating with all necessary fittings such as elbows, tees, coupler & Cowl with bird sceens for Fresh Air including flexible collar for connection as required. 110 mm dia	-	-
(for Copper Piping support)	-	-
Hot Dipped Galvanized Iron Cable Tray	-	-
perforated Hot Dipped Galvanised Iron cable tray (Galvanisation thickness not less than 50 microns) with perforation not more than 17.5%, in convenient sections, joined with connectors, suspended from the ceiling with G.I. suspenders including G.I. bolts & nuts, etc. as required.	-	-
2 x 1.5 sq. mm size of FRLS PVC insulated copper conductor, shielded with fine tinned copper braid protected with PVC sheath, single core cable in the existing surface/recessed steel/ PVC conduit as required. For control cum transmission from indoors to outdoors unit & centralized remote	-	-
20mm medium class PVC conduit along with accessories in surface/recess including cutting the wall and making good the same in case of recessed conduit as required. For control cum transmission from indoors to outdoors unit & centralized remote	-	-
channel iron (M.S. Structure) 100 mm X 50 mm X 6 mm (7.14 kg per metre) minimum 200mm-250mm height for installing VRV / VRF outdoor units along with vibration isolation pads, bolts and nuts including drilling holes for bolts, nuts and washers etc and galvanised / painting with primer and finish paint as required.	-	-
Additional charges for refrigerant topup for Refrigerant R410 to compensate the additional piping done at site as required	-	-
outdoor type (IP65) double door type panel made out of 2 mm thick MS sheet with hinged lockable cover and including 5 numbers 40Amp 4P	-	-

Description	Unit	Qty
ELMCB and mounting arrangement in different compartmentalized including MS structured frame for mounting of panel		
4 Core x 16 Sqmm sizes of 1.1 KV grade multi-core aluminium conductor XLPE / PVC insulated and PVC sheathed armoured power cable conforming to IS 7098 (Part-1) / IS 1554 (Part -1) with upto date amendments as required including laying of the same.	-	-
1 core x 6 Sqmm size of FRLS PVC insulated copper conductor, single core cable in PVC conduit, surfcae as required	-	-

Audio-Visual works:

Description	Unit	Qty
HDMI Matrix Switcher: Shall have HDMI Inputs Sixteen (16) HDMI Type A Receptacle HDMI Outputs Sixteen (16) HDMI Type A Receptacle. Video Input: 16 x HDMI Type-A Female Video Output: 16 x HDMI Type-A Female Video Resolution: Supports up to 4K UHD (3840 × 2160) @ 60Hz, 4:4:4 Scaling: Built-in scaler for upscaling/downscaling resolution HDCP Compliance: HDCP 2.2 / 1.4 compatible HDR Support: Yes, supports HDR10 and Dolby Vision Seamless Switching: Yes, with zero latency and instant switching EDID Management: Multiple EDID modes for compatibility with different displays Audio Extraction: Supports LPCM, Dolby TrueHD, DTS-HD Master Audio Control Methods: Front panel buttons, IR remote control, RS-232, Web-based GUI, Telnet & TCP/IP Ethernet Port: Yes, for network-based control RS-232 Port: Yes, for integration with control systems IR Receiver: Yes, for remote operation Power Supply: 100-240V AC, 50/60Hz Power Consumption: Approx. 50W Chassis: 19" Rack-mountable metal enclosure Dimensions: Approx. 482 × 340 × 90 mm (W × D × H) Weight: Approx. 5.5 kg Operating Temperature: 0°C to 50°C Storage Temperature: -20°C to 60°C Multi-View Display: Supports multiple layouts on a single screen Firmware Upgradable: Yes, via USB or network Built-in Signal Booster: Ensures reliable long-distance transmission Product Must have Regulatory FCC, CE, RoHS. Approved Make Extron / Libarty AV / Crestron / Fidelity / Aten	Each	1.00
Active 3.0 USB Cable Shall have Length 20 m (98.4 ft) Cable Type USB Cable Connector Type USB B Male USB-A Male Extension Type Active USB USB 2.0 USB 3.0 USB 1.1 USB 2.0 USB 3.0 USB 3.1 Gen 1 Fully Shielded Active Cable USB Port Powered No external power source Supports USB 3.1 (gen 1), 3.0, 2.0 & 1.1 Approved Make Extron / People link / HOC / Fidelity / Aten	Each	2.00
20 Mtr Fiber HDMI with 18Gbps transfer rate Cable Max Supported Video Resolution 3840 x 2160 @ 60Hz Supported Color Depth 48-bit Deep Color HDR Support 3D Video Supported Yes Chroma Sub Sampling EDID Support yes Signal Transmission Bidirectional Audio. Approved Make People Link / Extron / HOC / Fidelity / Aten	Each	16.00
10 mtr Fiber HDMI with 18Gbps transfer rate Max Supported Video Resolution 3840 x 2160 @ 60Hz Supported Color Depth 48-bit Deep Color HDR Support 3D Video Supported Yes Chroma Sub Sampling EDID Support yes Signal Transmission Bidirectional Audio . Approved Make People Link / Extron / HOC / Fidelity / Aten	Each	5.00
05 Mtr Fiber HDMI with 18Gbps transfer rate Max Supported Video Resolution 3840 x 2160 @ 60Hz Supported Color Depth 48-bit Deep Color HDR Support 3D Video Supported Yes Chroma Sub Sampling EDID Support yes Signal Transmission Bidirectional Audio Specification Stereo Audio. Approved Make People Link / Extron / HOC / Fidelity	Each	10.00

Description	Unit	Qty
2.5 Sq MM Speaker Cable Shall have Jacket: Flameretarded PVC, Ø 8.0 mm, black Insulation: PVC, Ø 3.2 mm, black und red Conductor: (OFC) Stranded bare copper wires 140 x 0.15mm (2.50mm ²) 140x34AWG = Conductor resistance: < 7.3 ohm/km Test voltage: cond/cond: 2000 veff Temperature range: flexi-installed: -5° to +50° C fix-installed: -30° to +70° C Maximum Watts load: current 15.0 Ampere/Line < 1650 Watt Twist 360° rotation of conductors: 105mm (pitch per meter 9.52) Approved Make People Link / Extron / HOC / Fidelity	As required	
Pocket / Clip on Microphone Shall have Transmission Type 2.4GHz Digital Frequency Agile System Acoustic Principle Pre-polarised pressure transducer Polar Pattern Omnidirectional Equivalent Input Noise 21.8dB (A-Weighted) Frequency Range 50Hz - 20kHz External Mic Input20Hz - 20kHz Maximum Output Level +3dBuMaximum SPL 100dB SPL (1kHz @ 1m) Dynamic Range100dBA (Mic Preamplifiers) Power Requirements Inbuilt Li-po battery rechargeable via USB Battery Life Up to 7 hours Analog Inputs 3.5mm TRS lavalier microphone input (transmitter) Analog Outputs3.5mm TRS (receiver) Computer Connectivity USB (firmware update)OS Requirements (For firmware update only) macOS 10.11 above Windows 10 and above Analog Outputs 6ms. Approved Make Clearone / Clock audio / Rode	Each	1.00
4 Channel Low and High Impedance Amplifiers Channels 4 Watt 600 X 4 Sensitivity (for full rated power at 8 ohms) 0.7V RMS Rated Power Output (per channel @ 4 ohms) 600W Analog Input Signal to Noise Ratio (ref. rated power, 100V, 20Hz - 20kHz) at 8 ohms) > 104dB THD (full rated power, 20 Hz - 20 kHz) 0.0035 Damping Factor (20 Hz to 100 Hz) > 1000 Frequency Response (8Ω, 20 Hz - 20 kHz) +/-0.25dB Crosstalk (below rated power) 20 Hz to 1 kHz > 80dB DSP On-board Digital Signal Processor in each amplifier allows forcustom configuration and includes these integrated Input Router Input Delay - Up to 1000ms Input Parametric EQ - 8 band Crossover Output Parametric EQ - 8 band Output Delay - Up to 100ms Network Control and Monitoring - controlled, configured, and monitored through standard TCP/IQ network. GPIO/AUX Port Recall presets, mute channels, monitor faults, power on/off the amplifier, and more through a combined GPIO/AUX Port. Digital Signal Processing 96kHz, 32-bit floating point Voltage Gain 34dB Frequency Response ±0.25dB. Approved Make Audac / Extron / Crown / Fidelity	Each	1.00
rack mount mixer with the following specifications: 12 channels, 10 faders with dimensions of 60mm each. The mixer should have 8 XLR inputs with phantom power, 12 1/4" TRS line inputs, and 1 dual RCA stereo input for auxiliary purposes. For outputs, the mixer should have 2 XLR main outputs, 2 1/4" TRS control outputs, and 1 dual RCA stereo output for CD/tape. The mixer should also have 1 pre/post aux send, 2 1/4" TRS monitor/FX send and return I/O, and 8 1/4" TRS inserts for channels. The EQ bands should be 2-band, and the mixer should have 50 reverb effects, 10 delay effects, 10 chorus effects, 10 phase/pitch effects, and 10 multi-FX effects. Finally, the mixer should be rack mountable. Approved Make Yamaha / Behringer / Denon pro /Asley	Each	1.00

Description	Unit	Qty
Loudspeaker must be a surface-mount column type, consisting of 12 x 2" aluminum cone full-range drivers, which are fitted inside a slim and elegant designed enclosure. It shall be fitted with a multi-tapping line transformer allowing the speaker for being used in 70/100V public address systems or standard low impedance (12Ω) audio systems. It must have an RMS power handling of 240 Watt with a maximum power handling of 480 W Watt and the frequency response (±3 dB) should range from 150 Hz to 20 kHz. The sensitivity must reach 92 dB when measured with an input signal of 1 Watt at a distance of 1 meter, while a maximum continuous sound pressure level of 113 dB should be reached. The nominal dispersion shall be a 260° horizontal and 90° vertical coverage pattern at -6dB (average 100 Hz - 10 kHz) The line transformer power taps shall be selectable through a rotary selector switch on the rear side of the speaker and adjustable in steps of 40W, 20W and 10W for 70/100V (a 5W tapping is available for 70V use). Fast and reliable connections shall be possible through a 3-pin terminal block connector Multi-functional Collam Loudspeaker Speaker type Broadband column Impedance 4 Ω Sensitivity (1W/1m) 92 dB Frequency Range (-10 dB) 120 Hz - 20 kHz Frequency Response (± 3 dB) 150 Hz - 20 kHz Drivers 12 x 2" Dispersion Horizontal X Vertical 174° X 9° Incline angle Bottom X Left X Right 42° X 42° X 13° . Approved Make Audac / K- Array / Yamaha	Each	2.00
Remotely controlled light dimming module work with various types of light sources. It may be connected to two-wire or three-wire configuration so it can operate with or without neutral lead shall have Compatible with any 3rd Party Controller and should have Advanced microprocessor control Implemented algorithm of smart light source detection Auto-adjustment of the appropriate control mode to connected load Active power and energy metering functionality Soft start function Memory of the last lighting level settings Works with various types of switches - momentary, toggle, three-way, etc. Power supply 100-240 V~ 50/60 Hz Power consumption < 1.3W Operational temperature 0-35°C Operational current:0.25-1.1A Device temperature protection: 105°C Active element semiconductor electronic switch Radio transmit power: up to 6 dBm (EIRP) Comply with EU directives: RED 2014/53/EU RoHS 2011/65/EU Master Lighting Controller Shall have Processor Should be connects devices to the network and controls communication among them. It connects either locally or to the cloud and allows to control devices via app. One Should Support and manage multiple connected devices simultaneously. Interface available through web browser or External Touch Panal Device Must be Compatible with range of sensors, actors, remotes, and various IP cameras. Devices support per controller 232 Low energy consumption. master Controller Should be Supplied and intigrated with 4 button Touch Panal For mannual Control of Preset Lighting Senarioes shall have Gang box Size 2 Modular British Standard Dimensions Minimum 95*95*34.2 mm Power Rating 110 - 240V AC, 50 Hz Load Rating1000W Resistive wireless Remot elegant, battery-powered For control & trigger various other smart devices & predefined rules/scenes remote. can operate 9 different gestures with just 3 actions - TAP, DOUBLE TAP, PRESS & HOLD	Set	1.00
Table Cable Cubby shall have 1 x Universal Power point 6/13A, 1 x USB Charger 1 x RJ45 Network flip open cover system, mounted into a table oft opening with comfort and safety Equipped with Flip open cover system made up of steel and aluminium Approved Make Extron / Crestron / Fidelity / Logic	Each	11.00

Description	Unit	Qty
Cat 6A U/FTP Cable is specifically designed to support high speed data network, applications such as 10-Gigabit Ethernet (10GBASE-T). The cable is constructed of 4 screened pairs and a drain wire. This cable minimises alien crosstalk, provides excellent signal isolation and provides superior electromagnetic interference (EMI) protection. Technical Characteristics Primary Insulation: Polyolefin Screen material: Laminated Aluminium Sheath Type: PVC or LSOH (Flame Test IEC 60332-1), Nominal OD: 7.2, NVP: 75-77%, Screen: Each pair enclosed in laminated aluminium foil, Drain Wire: tin-coated copper Electrical Characteristics Capacitance: 40 pF/m nom. @1 KHz., DC Resistance: 72 /Km max. Propagation Delay: 514 + 36f1/2 nS/100m, max @1-500 MHz, Propagation Delay Skew: 45 nS/100 max @ 1-500 MHz, Mean Impedance: 100 ± 6 @ 1-500 MHz, Resistance Unbalance: 2% max. Approved Make Molex / Comscope / Element Cable	Mtr	1250.00
48 Port Managed Network Switch Quality of Service (QoS) support ARP inspection System event log MIB support RFC 1066, RFC 1213, RFC 1157, RFC 1493, RFC 1643, RFC 1757, RFC 2011,2012,2013, Basic switching RJ-45 Ethernet ports quantity 44 Basic switching RJ-45 Ethernet ports Gigabit Ethernet (10/100/1000) Combo SFP ports quantity 4 SFP module slots quantity 2 Fiber optic connector SFP Internal memory 256 MB Flash memory 32 MB Noise level 26 dB Mean time between failures (MTBF) 672235 h Copper ethernet cabling technology 100BASE-TX, 1000BASE-T Flow control support Rate limiting Spanning tree protocol VLAN support Virtual LAN features Private VLAN, Voice VLAN, Protocol-based VLAN, MAC address-based VLAN, Port-based VLAN, IP subnet-based VLAN Fiber ethernet cabling technology 1000BASE-X Switching capacity 100 Gbit/s Forwarding rate 74 Mpps MAC address table 16000 entries Packet buffer memory 1.5 MB DHCP DHCP snooping, DHCP relay, DHCPv6 relay, DHCP client Access Control List (ACL) IGMP snooping Security algorithms 802.1x RADIUS, SNMP, SNMPv3 MAC address filtering IP-MAC-Port binding Authentication Guest VLAN, Port-based authentication Password protection Authentication type IEEE 802.1x, RADIUS CPU defense Queue scheduling algorithms SPQ, WFQ, Weighted Round Robin (WRR) Multicast support . Approved Make Cisco / Zyxel / Juniper / Aruba	Each	1.00
High Data transfer USB 3.0 Hub Should Support Transfer Speed up to 5Gbps (USB 3.0), USB Socket 2.0 up to 480Mbps. Extension 4 Ports USB 3.0 Hub Expand one USB port to four. Reverse Compatible USB 2.0 / USB 1.0. Device Should be Plug & Play, and Hot Swappable.	Each	1.00

Description	Unit	Qty
<p>19" 24-port (1U) Cat 6A Shielded Patch Panels are made from robust sheet metal. These panels are also supplied with robust removable rear cable management trays for cable strain relief and neat cable dressing. Port numbering is provided on the front and rear of the panel and individual ports may be colour coded using connector icon labels for site specific network administration.</p> <p>Mechanical Characteristics IDC Connector, Plastic Housing: Polycarbonate, UL94V-0 rated, Operating Life: Minimum 20 reterminations, Contact Material: Copper Alloy, IDC Contact Plating: Tin Matte finish, Contact Force: 100g minimum, Wire Accommodation: 22-24 AWG solid, Patch Panel Characteristics, Material: CRS (cold rolled steel), Thickness: 1.52mm (.060"), Coating: Black Powdercoat, Jack Connector, Housing: Zinc Alloy plated Bright Ni/Cu, Operating Life: Minimum 750 insertion cycles, Contact Material: Copper Alloy, Contact Plating: 1.25 micrometres Au/Ni, Contact Force: 100g minimum, Plug Retention Force: 6.8kg minimum</p> <p>Electrical/Optical Characteristics Interface Resistance: 20mΩ Initial Contact Resistance: 2.5mΩ Insulation Resistance: >100 MΩ</p> <p>Category Should accept 10G Approved Shielded Jacks CAT6A jacks</p> <p>Front Connector interface, RJ45 Circuit Identification Scheme, Icons on each of 24-ports Port Identification 9mm or 12mm Labels on each of 24-ports (to be included in supply) Height 1 U (1.75 inches) Interface Polyester Molding Compound, Black ROHS/ELV Compliant ETL Certification Compliant Approved Make - Molex / Belden / Element Cables</p>	Each	2.00
<p>6A DataGate Shielded Jack Should have 10GBASE-T transmission Data jack having crosstalk suppression, excellent insertion loss, and provides enhanced electromagnetic interference (EMI) protection by utilizing robust die cast zinc alloy jack body housing. This shielded jack also features a unique spring loaded shutter that not only protects it from dust and contaminates, but the ingenious spring loaded design also ejects improperly seated patch cords. The shielded jack is dual colour coded for either 568A or 568B wiring schedules. Approved Make Molex / Element Cables / Comscope</p>	Each	50.00
<p>1 Meter Cat 6A Shielded Patch Cords, specifically designed to support high speed data networks for 10-Gigabit Ethernet (10GBASE-T) applications. Conductor 26AWG stranded bare copper Length 1 Meter Screen material Aluminium/polyester shield with tinned copper drain wire</p> <p>Warranty 25-year component warranty</p> <p>Construction Pairs in Metal Foil , 4 pair stranded S/FTP cable</p> <p>Plug Housing Clear polycarbonate</p> <p>Commercial Standards TIA/EIA-568-C.2 , ISO/IEC 11801 A1.1, FCC Subpart F 68.5, IEC-603-7, UL Listed, UL-1863, CSA C2.2</p> <p>Electrical Characteristics Electrical Characteristics, Max Voltage: 150 VAC (max), Max Current: 1.5A @ 25°C, Operating temperature: -40° to 85°C</p> <p>Mechanical Characteristics Operating Life: Minimum 750 insertion cycles, Contact Material: Copper Alloy, Contact Plating: 1.25 micrometres Au/Ni</p> <p>ROHS/ELV Compliant ETL Certification Compliant Approved Make - Molex / Belden / Element Cables</p>	Each	50.00

Description	Unit	Qty
3 Meter Cat 6A Shielded Patch Cords, specifically designed to support high speed data networks for 10-Gigabit Ethernet (10GBASE-T) applications. Conductor 26AWG stranded bare copper Length 1 Meter Screen material Aluminium/polyester shield with tinned copper drain wire Warranty 25-year component warranty Construction Pairs in Metal Foil , 4 pair stranded S/FTP cable Plug Housing Clear polycarbonate Commercial Standards TIA/EIA-568-C.2 , ISO/IEC 11801 A1.1, FCC Subpart F 68.5, IEC-603-7, UL Listed, UL-1863, CSA C2.2 Electrical Characteristics Electrical Characteristics, Max Voltage: 150 VAC (max), Max Current: 1.5A @ 25°C, Operating temperature: -40° to 85°C Mechanical Characteristics Operating Life: Minimum 750 insertion cycles, Contact Material: Copper Alloy, Contact Plating: 1.25 micrometres Au/Ni ROHS/ELV Compliant ETL Certification Compliant Approved Make - Molex / Belden / Element Cables	Each	50.00
Wireless Display Output Resolution Support 4K@60fps and above video output when casting onto 1 display Support 2K@60fps and above video output when casting onto 2 displays Video Encode/Decode H.264,H.265 hard decoding Wireless Transmission Protocol IEEE 802.11 a/g/n/ac Wireless Band 2.4GHz,5GHz (support transmitting AP hotspot) Wi-Fi Antenna Support 2T2R Cable Network Supported Transmit Terminal Quantity Limit 8 Screen Split Limit 4 Version Android 7.1 CPU 2x A72+4x A53 GPU Mali T860 Mali T860 4GB ROM 16GB LINE OUT 1 Optical Fiber Output 1 USB2.0 2 HDMI OUT 2 DC Input 1 LAN Security Key Lock 1 Buttons Short press to freeze/wake, long press to power on/off Device shell include 2 no of Wireless USB Adopter. Approved Make Maxhub / Barco / Fidelity	Each	1.00
Lepal Set: Shall have Microphone type, Electret condenser Polar pattern: Cardioid Frequency response: 50Hz - 20kHz Sensitivity: 20mV/Pa Maximum sound pressure level (SPL): 144dB Connector type: 3.5mm locking jack Cable length: 1.6m (5.25 ft) receiver: Frequency range: 626 - 668 MHz Audio bandwidth: 42MHz THD (total harmonic distortion): < 0.9% Signal-to-noise ratio: > 110dB(A) Receiver type: True diversity Display: OLED Antenna connector: BNC Audio output connector: 1/4" (6.3mm) jack Power supply: 12V DC. Approved Make - Shennisher / Audix/ Clock Audio	Each	1.00
wireless presenter remote Shall have Red laser pointer with a range of up to 15 meters Plug-and-play wireless receiver with a range of up to 20 meters Slideshow controls: next, previous, start, and stop Timer function with silent vibration alerts On/off switch to conserve battery life Compatible with Windows and Mac operating systems Battery life of up to 12 months with AAA batteries (may vary based on usage)	Each	2.00
19 U Equipment Rack with all Required Accessories Including 2 PDU all complete as per the requirement of the site and as per the direction of Engineer-in charge	Each	2.00
User PC complete: shall have Processor 12th Gen Intel® Core™ i7-12700 (25 MB cache, 12 cores, 20 threads, 2.10 GHz to 4.80 GHz Turbo) Operating System Windows 11 Home Single Language, English Video Card Intel® UHD Graphics 770 Memory 16 GB, 1 x 16 GB, DDR4, 3200 MHz Hard Drive 512 GB, M.2, PCIe NVMe, SSD Ports Front 1 USB 3.2 Gen 1 port 1 USB 3.2 Gen 1 Type-C® port 2 USB 2.0 ports 1 Global headset jack Rear: Slots 3 SATA 3.0 ports 1 PCIe x16 slot 1 PCIe x1 slot 1 SD-card slot 1 M.2 2230 slot for WiFi and Bluetooth combo card 1 M.2 2230/2280 slot for PCIe solid-state drive and 24-inch (60.46cm) FHD, IPS Display, 100 Hz, 1920 x 1080 Flat Monitor. Approved Make Dell / HP / Lenovo.	Each	1

Description	Unit	Qty
Touch Screen Table top Monitor: HD LCD table monitor integratable into conference tables with an all-aluminium structure, HD display, HDMI/VGA inputs, and control panel, with lift feature, sleek design with 4K resolutions, 16:9 aspect ratio, and 400 cd/m ² brightness, supports 10-point touch input and various connectors, including HDMI, offer multiple control methods, including panel buttons and remote control. With a low power consumption, robust Lifespan of 50,000 hours for the LED backlighting, ideal for modern meeting rooms. Feature should include automatic lifting and tilting, a 105-degree viewing angle, and safety functions. Make: PeopleLink Table Top Monitor or equivalent	Each	11
All-in-One Video Conferencing Display: Providing and Fixing of 55-inch 4K UHD Commercial display a resolution of 3,840 x 2,160. It has a brightness of 400 cd/m ² , a contrast ratio of 1,300:1, and a response time of 9 ms (G to G). The viewing angle is wide at 178 x 178 degrees, and the color depth is 10 bit (8bit + A-FRC) with a wide color gamut of DCI-P3 90%. The TV has an audio output of 10 W + 10 W and runs on webOS 3.5 operating system, supporting Wi-Fi, Ethernet, and Bluetooth connectivity. It has 3 HDMI ports, 2 USB ports, 2 RF inputs, 1 Composite In (AV), 1 Component In (Y/Pb/Pr), and 1 Digital Audio Out (Optical). The TV also features RS-232C (Control / SVC) connectivity and an RJ45 port. HDTV formats supported include 1080p, 1080i, and 720p. It has a VESA mount of 300 x 300 mm and is powered by AC 100-240 V~, 50/60 Hz, with a maximum power consumption of 150 W. Approved Make LG / NEC / Sony (Model: LG-55CT5WJ or equivalent)	Each	1
Display Signage Screen Size 55" with CMS Signage software. Back Light Type Direct, Native Resolution 3840 x 2160 (UHD), Brightness 500nit, (Typ.) Dynamic CR 1,000,000 : 1, Viewing Angle(H x V) 178 Deg.(H) x 178 Deg.(V) , Response Time 8ms (Typ.), Portrait and Landscape support , Panel Technology IPS, Aspect Ratio 16:9, Refresh Rate 60Hz, Contrast Ratio 1,100:1 or high, Color Gamut. BT709 95%, Color Depth 1.07 Billion Colors (10 bit) ,Surface Treatment 28% or high, Operation Hours (Hours/Day) 24/7,Power Consumption. Typ. 130 W. Max. 180 W, Input HDMI (3), RJ45(LAN) (1), IR IN , USB2.0 Type A (1), Output.HDMI, Audio, RS232C , Internal Memory 16GB,Built-in Wi-Fi, Background Image (Booting Logo Image, No Signal Image), Sync Mode (RS-232C Sync, Local Network Sync), Multi-screen (PIP, PBP (4)), Screen Share, Video Tag (4), Play via URL, Rotation (Screen Rotation, External Input Rotation), Gapless Playback, Tile Mode Setting (Max. 15 x 15), Setting Data Cloning, SNMP, ISM Method, Auto Set ID, Status Mailing, Control Manager, (based on EMMC), Wi-Fi . Bluetooth (Built-in), Power Indicator, Local Key Operation, Wake on LAN, Network Ready, Beacon, HDMI-CEC, SI Server Setting, web RTC, Certification: Safety CB . NRTL, EMC. FCC Class "B" . CE .KC. ErP, Complete job as per site requirement & direction of Engineer-in-Charge. . Approved Make LG/ Sony / christie	Each	3

CCTV Work:

Description	Unit	Qty
4MP Fixed Verifocal camera with Internal/External IR with 1/2.9-inch CMOS, Total sensor pixels 2560 (H) x 1440 (V); up to 25fps;Color 0.4 lx, Mono 0.05 lx, IR 0.0 lx or better, 120dB WDR, H.265; H.264; M- JPEG, Automatic Electronic Shutter (AES); Intelligent Dynamic Noise Reduction, Intelligent Defog, Privacy Masking, Pixel counter, Memory card slot, IR Range 30mtr, Automatic Varifocal 3.3 to 8 mm, Alarm Input 1/1, Audio Input/output, RJ45, G.711, Audio Streaming Full-duplex / half duplex, ONVIF Profile S, G ,T,M , MTBF>90000 hours,IP66, IK10, PoE, CE, FCC,AES/FIPS encryption, signed firmware, SD card support up to 1TB, UL certified, FTP, Dropbox and e-mail applications Approved make List:Bosch/Mobotix/Avigilon	Nos.	2
4MP Fixed Verifocal Bullet camera with Internal/External IR with 1/2.9-inch CMOS, Total sensor pixels 2560 (H) x 1440 (V); up to 25fps;Color 0.4 lx, Mono 0.04 lx, IR 0.0 lx or better, 120dB WDR, H.265; H.264; M- JPEG, Automatic Electronic Shutter (AES); Intelligent Dynamic Noise Reduction, Intelligent Defog, Privacy Masking, Pixel counter, Memory card slot, IR Range 50mtr, Automatic Varifocal 4.9 to 8 mm, Alarm Input 1/1, Audio Input/output, RJ45, G.711, Audio Streaming Full-duplex / half duplex, ONVIF Profile S, G, T, M IP66, IK10, PoE, CE, FCC,AES/FIPS encryption, signed firmware, SD card support up to 1TB, UL certified, MTBF>90000 hours, FTP, Dropbox and e-mail applications, 5 years OEM warranty, IP66, IK10, CE, FCC,Trusted platform module and PKI, SD card support up to 2TB, UL certified, Approved make List:Bosch/Mobotix/Avigilon	Nos.	2
16 channel NVR with [2 SATA port] for IP CCTV Cameras up to 4K resolution with HDMI and VGA Output, Motion detection, H.265 Hik-Connect 4K NVR with 60TB Storage capacity	Nos.	1

FIRE DETECTION AND ALARM SYSTEM:

Description	Unit	Qty
Two Loop Panel: micro processor based intelligent addressable main fire alarm panel, central processing unit with the following loop modules and capable of supporting not less than 240 devices (including detectors) and minimum 120 detectors per loop and loop length up to 2 km, network communication card, minimum 320 character graphics/ LCD display with touch screen or other keypad and minimum 4000 events history log in the non volatile memory (EPROM), power supply unit (230 ± 5% V, 50 hz), 48 hrs back-up with 24 volt sealed maintenance free batteries with automatic charger. The panel shall have facility to connect printer to printout log and facility to have seamless integration with analog/ digital voice evacuation system (which is part of the schedule of work under SH: PA System) and shall be complete with all accessories . The panel shall be compatible for IBMS system with open protocol BACnet/ Modbus over IP complete as per specifications. Approved Makes: BOSCH / Esser / Ziton	Each	1
central graphical fire alarm management system to centrally monitor and operate the fire alarm system complete as required.	Each	1
Repeater panel wih 320 character/ Touch screen LCD display with inbuilt reset, acknowledge and silence switches complete as required	-	-
Below ceiling addressable multisensor detector with a combination of Optical and Thermal including mounting base, auto addressing feature as required. Detector should have inbuilt dual fault isolators as per NFPA 72 style 7 wiring requirements and have an option of both soft & hard addressing. Detector should have drift compensation feature & integrated EMI/EMC circuit to monitor Electromagnetic interference and report to the panel - current and average values. EMC safety for detector shall be 50 V/m Should have Vds/	-	-

Description	Unit	Qty
EN54/ UL & FM Certification. Isolators may be considered with an additional Isolator Module per detector) Approved Makes: BOSCH / Esser / Ziton		
Above ceiling addressable multisensor detector with a combination of Optical and Thermal including mounting base, auto addressing feature as required. Detector should have inbuilt dual fault isolators as per NFPA 72 style 7 wiring requirements and have an option of both soft & hard addressing. Detector should have drift compensation feature & integrated EMI/EMC circuit to monitor Electromagnetic interference and report to the panel - current and average values. EMC safety for detector shall be 50 V/m Should have Vds/ EN54/ UL & FM Certification. Approved Makes: BOSCH / Esser / Ziton. (Detectors without Inbuilt Isolators may be considered with an additional Isolator Module per detector) Approved Makes: BOSCH / Esser / Ziton	-	-
Response indicator on surface/recessed MS Box having two LED, metallic cover complete with all connections etc as required	-	-
Intelligent addressable programmable sounder complete as required.	-	-
Fault isolator complete with base as required.	-	-
Addressable fire control module complete as required.	-	-
Addressable phone control module complete as required	-	-
Addressable manual call point complete as required.	-	-
Addressable horn cum strobe complete as required	-	-
Fire fighter telephone handset complete as required.	-	-
Fire fighter phone jack complete as required	-	-
2x1.5 sqmm fire alarm armoured cable, 600/1000V rated with annealed copper conductor having XLPE insulation, steel wire armouring & FRLS outer sheath complete as required.	-	-
PUBLIC ADDRESS SYSTEM		
6 zone, voice alarm controller with USB, MP3 player (including 6 zone button paging station) with seamless integration facility with main fire alarm panel for voice evacuation complete as required.	Each	1
1.5/3/6W metal box ceiling/wall speakers complete as required.	-	-
Ceiling/wall mounted loud speaker, 3/1.5 Watt in ABS enclosure complete as required	-	-
Digital audio amplifier 50 Watt, 25V rms operating at 240 volt AC supply complete as required.	Each	1
Exit point directional sound speaker with voice and integral audio amplifier with selectable sound pulse patterns complete as required.	-	-
Voice command keypad 6 zone, with microphone assembly complete as required	-	-
Cable Fire Retardant PVC insulated copper conductor cable in PVC conduit of following pairs, cores and size including connections and interconnections etc. as required. speaker cable Two pair, 2-core, 1.5 sqmm	-	-
IP based desktop call station for PA system operation. The call station shall be certified for EN 54-16 and ISO 7240-16, marked for CE and be compliant with the RoHS directive.Desktop housing with gooseneck microphone. 4.3" full-color capacitive touch display .It shall provide control and routing of live speech calls, stored messages and music with volume control per zone.. Graphical user interface for optimum user guidance and feedback.Status and fault indicators for voice alarm purposes.Dual Audio over IP-network ports for redundant network. The audio data Encryption over IP should comply AES 128.It shall receive Power over Ethernet (PoE) via either one or both network	-	-

Description	Unit	Qty
connections. Approved Make : Bosch, TOA, Dynacord, Majorcom, Baldwin Boxall		
call station extension keypad for use with a desktop or wall mount call station. It shall provide 12 configurable buttons for zone selection and other purposes. Each button has tactile feedback and a light ring activation indicator, complemented with a set of multi-color LEDs for function related status indications. The call station extension shall have a removable front cover to put language independent button labels behind the front cover. The call station extension shall be certified for EN 54-16 and ISO 7240-16, marked for CE and be compliant with the RoHS directive. Approved Make : Bosch, TOA, Dynacord, Majorcom, Baldwin Boxall	-	-
IP based Wall mount housing with fixed hand-held microphone and helix cable for PA system operation. It shall receive Power over Ethernet (PoE) via either one or both network connections. The call station shall be certified for EN 54-16 and ISO 7240-16, marked for CE and be compliant with the RoHS directive. 4.3" full-color capacitive touch display. Graphical user interface for optimum user guidance and feedback. Status and fault indicators for voice alarm purposes. Dual Audio over IP-network ports for redundant network. The audio data Encryption over IP should comply AES 128 Approved Make : Bosch, TOA, Dynacord, Majorcom, Baldwin Boxall	Nos	1

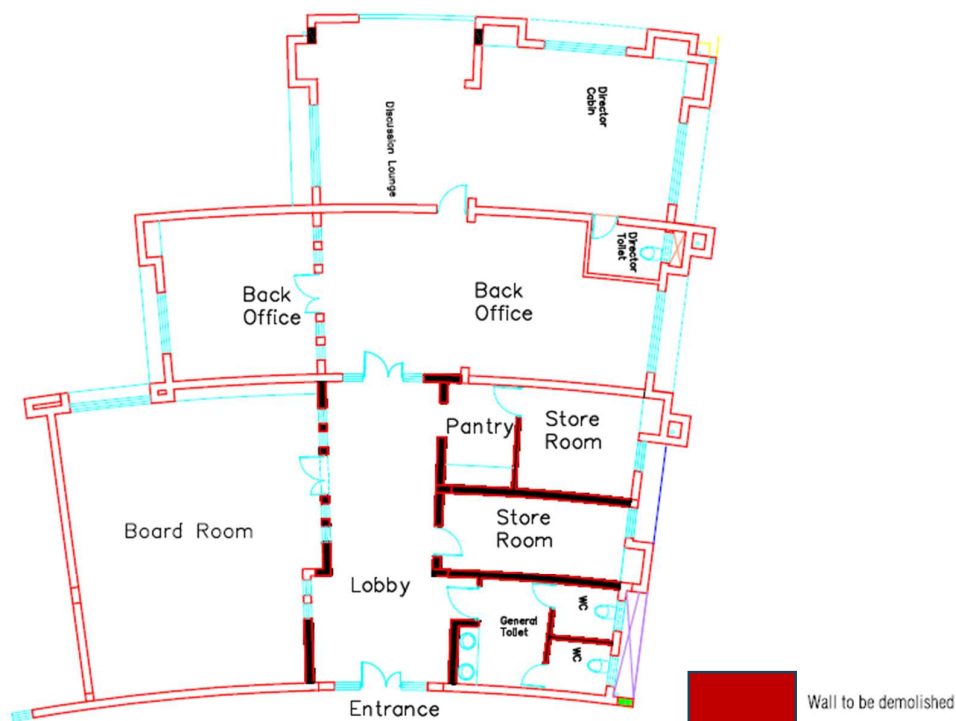
List of Approved Makes

Sl no	Item Description	Makes / Brands
1	CIVIL INTERIORS	
	Civil Works	
	Cement	ACC, Ultratech, Ambuja, JayPee
	Vitrified Tiles - 1200 x 600 mm/ 600mm x 300 mm	Somany, Kajaria
	Tile Grouts	Laticrete or Bal Endura
	Water Proofing Compound	Dr Fixit / Fosroc /MYK
	Engineered Stone	Corian/Hafele
	Carpentry & Ceiling Works	
	Gypsum Ceiling	Saint Gobain / Gyproc / India Gypsum
	Mineral Fiber Ceiling	AMF / Armstrong
	Acoustical Panelling	Tranquil / Vision / Bergurey / Contonum
	Partition Insulation	Rockwool India or equivalent
	Glass & Mirrors	Saint Gobain / Defenz / Ashai
	Glass Partitions	Jeb /Damian
	Fire retardant Plywood FR+	Century, Merino, Greenply
	Marine Plywood	Century, Merino, Greenply
	Flexible Plywood Fire retardant FR+	Century, Merino, Greenply
	Commercial Block Board	Century, Merino, Greenply
	Marine Block Board	Century, Merino, Greenply
	MDF	Asian, Merino, Associate Décor
	Plain Particle Board	Asian, Merino, Associate Décor
	Pre-laminated Particle Board	Asian, Merino, Associate Décor,
	Adhesives	Fevicol or equivalent
	Aluminum Sections	Jindal, Hindalco
	Laminates	Merino, Greenply
	Fabric	Response or equivalent
	Flush Door	Century, Greenply, Merino

	Door Hardware	Geze, Dorma, Haffle,
	Smart Glass	As approved by Engineer-in-Charge
	Paints :	
	Enamel Paint	ICI Dulux / Asian Paints / Nerolac
	Paint - Luster / Plastic	ICI Dulux / Asian Paints / Nerolac
	Miscellaneous Works	
	Furniture	Featherlite/Godrej
	Transition profile	Bottom line or equivalent
	Aluminium Skirting	Bottom line or equivalent
	Glass Films	3M / Avery Danisons
	Roller & Blackout Blinds	Vista / Hunter Douglas / Piffer / Mac
	Modular Furniture	Featherlite/Godrej
	Chairs	Featherlite/Godrej
	Carpet Tiles	Welspun/Standard/Tuntex
2	Electrical	
	UPS	Emerson / APC / HI REL
	Batteries	Amararaja, Exide
	Cables	Polycab, RR Kabel, Finolex
	Industrial sockets	Neptune bals, Havells, Schneider
	MCB & DBs	Legrand, Hager, Schneider, ABB
	Sockets & Switches	Schneider, Legrand-Arteor, Siemens
	Digital Meters	Conserve or equivalent
	PVC Conduit	Polycab, Finolex
	Switchgear	Schneider, Legrand, ABB
	Functional Lighting	Philips, Wipro, Bajaj
	Decorative Lighting(local)	Lighting Impulse, Purple Turtle, Chandra Lamps, Philips
3	Mechanical-HVAC	
	VRV-VRF Units	Toshiba, Mitsubishi, Daikin, LG
	Air terminals/Diffusers	Dynacraft, Unitile, Air master
	Duct work	Zeco, Rolastar
	FIBRE GLASS INSULATION	UP TWIGA / OWENS CORNING / KIMMCO / SEVANSTAR
	ELESTOMERIC NITRILE RUBBER INSULATION - FM approved	RMAFLEX / K-FLEX / ALP AEROFLEX/ THERMOBREAK
	Flexible ducts	SEVEN STAR / TWIGA / TITUS/Supa Flex
4	FA & PA	
	Fire Alarm System	Honeywell, Seimens, Schneider, Edwards, Bosch
	Public Address System	Honeywell, Seimens, Schneider, Edwards, Bosch
5	Plumbing	
	Sanitaryware	Grohe/Toto/Kohler
	CP Fittings	Grohe/Toto/Kohler
6	Audio-Visual	
	HDMI Matrix Switch	Extron / Libarty AV / Crestron / Fidelity / Aten
	USB Cable	Extron / People link / Aten
	HDMI cable	People Link / Extron / Aten
	Speaker Cable	People Link / Extron / Legrand
	Pocket / Clip on Microphone	Clearone / Clock audio / Rode/ Shure/ Schneider
	4 Channel Low and High Impedance Amplifier	Audac / Extron / Crown / Fidelity / BOSCH

	Mixer	Yamaha / Behringer / Denon pro / Asley / Soundcraft
	Loudspeaker	Audac / K- Array / Yamaha / Bosch
	Cat 6A U/FTP Cable	D-link, Molex / Comscope / Element Cable / Legrand
	Table Cable Cubby	Extron / Crestron / Fidelity / Logic
	Network Switch	Cisco or equivalent
	19" 24-port (1U) Cat 6A Shielded Patch Panels	Molex / Belden / Element Cables / Legrand
	6A DataGate Shielded Jack	Molex / Element Cables / Comscope / Legrand
	Patch Cords	Molex / Belden / Element Cables / Legrand
	Wireless Display	Maxhub / Barco / Fidelity / LG
	Lepal Set	Schneider / Audix / Clock Audio / Shure
	Touch Screen Table top Monitor:	PeopleLink Table Top Monitor or equivalent
	User PC	Dell / HP / Lenovo.
	All-in-One Video Conferencing Display	Model: LG-55CT5WJ or equivalent
	LED Display / Signages	LG / Sony / christie
7	CCTV	Sony/Bosch/Mobotix/Avigilon / Axis

Important Note: Engineer-in-Charge reserves the right to select any above approved make or equivalent make without compromising with the output criteria in view of availability in the time bound manner, harmonizing the development with existing one and in the interest of the work & delivery. The decision of Engineer-in-Charge in this regard shall be final and binding to the contractor.



Existing Layout of Director's Secretariat

Q.	FINANCIAL BID
-----------	----------------------

1. The Financial Bid is to be filled through e-procurement portal namely CPPP through <https://eprocure.gov.in/eprocure/app>
2. Any other mode of bid submission will not be accepted.

Sd/-
Tender Inviting Authority